



Cole Valley can't stop Homedale for long

Homedale High School junior Rachel Wheeler, left, ran into a road block in the form of Cole Valley Christian junior post Chelsea Feil last week, but the Trojans prevailed.

Trojans pull away at home

The scoring finally came around for the Homedale High School girls basketball team, but the Trojans still had a bit of a fight in beating Cole Valley Christian on Nov. 21.

Senior Jordan Warwick scored

11 points, and sophomore Kendall Rupp added 10 in Homedale's 51-32 non-conference victory at home. It was Cole Valley's fourth consecutive loss.

But the Chargers, who moved up to the 2A ranks this season,

hung tough through most of the first half. The Trojans went on a 7-0 run to close out the first half and snap an 18-18 deadlock.

The Trojans (1-3 overall at

— to page 2B

4-0 Rimrock girls taking what's given

With outside shot shut off, freshman posts spark win over Cole Valley

There is some sort of youth movement going on with the Rimrock High School girls basketball team.

That could mean (more) serious trouble for the Raiders' league

foes as the 1A Western Idaho Conference season opens Thursday.

Submitted for the 1A WIC's review: Freshmen Jackie Thur-

— to page 3B



Trojans JV wins with balancing act

Homedale High School sophomore Sierra Aberasturi, right, leans away from Cole Valley Christian's Kara Grigsby to take a shot during the Trojans' 50-30 non-conference victory last week. All but one Homedale player scored in the victory. Homedale's freshman team posted a 36-19 victory on Nov. 21.

Sports

Several Huskies deemed All-WIC worthy

Shea McClellin gained more than 1,800 yards rushing while cruising to the 2A Western Idaho Conference Offensive Player of the Year Award this season.

Fittingly, two of the guys opening holes for him were named

to the All-WIC squad.

Senior Don Galligan earned a first-team nod from the conference's coaches, while sophomore Martin Galvez was placed on the second team.

McClellin swept the player of

the year awards, also earning the defensive honor.

"It was nice having double player of year in Shea," Marsing coach Don Heller said. "That one was unanimous."

Galligan also doubled up,

landing on the first-team defense as a lineman after the Huskies' first trip to State since 2001.

Other Marsing first-teamers included senior linebacker Daniel Ineck, who also was an honorable mention tight end, and senior

defensive back Aaron Salvas, who earned second-team recognition as a receiver.

Seniors Johnathan Cossel (defensive line) and Troy Dines (linebacker) also were honorable mention picks.

Christoffersen collects award

From the better late than never department, Homedale High School graduate Tyler Christoffersen stopped off at a basketball last week to pick up his outstanding senior athlete of the year award.

Christoffersen, who says he just wrapped up a season of playing intra-collegiate football at BYU-Idaho in Rexburg, was named the Trojans' male athlete of the year last spring in voting by the school's coaches.

Idaho State University freshman Cheyanne Andrade was named the female athlete of the year from Homedale. She took home

her award in the weeks after graduating, but Christoffersen already had left town for the summer.

Christoffersen and Andrade were among a slew of recently graduated Homedale athletes back in town last week for Thanksgiving.

Former Homedale volleyball and basketball player Hailee Garrett and Christoffersen's former Trojans wrestling teammate, Jeremy Ensley, also were seen mulling around in the lobby of the school's gymnasium at halftime of the Homedale-Cole Valley junior varsity girls

basketball game.

Christoffersen was named the school's outstanding senior athlete of the year after winning his second state championship in wrestling and earning defensive most valuable player honors for the West squad in the District III High School All-Star Football Game.

Homedale athletic director Dave Hart presented Christoffersen with his athlete of the year plaque.

The BYU-Idaho freshman said he wanted to catch on as an assistant coach for a nearby high school wrestling team upon his return to Rexburg.



Tyler Christoffersen, left, and Trojans athletic director Dave Hart.

Trojan Sports

GIRLS BASKETBALL

Varsity
Friday, Dec. 1 at Marsing, 30 minutes after JV A game ends
Saturday, Dec. 2 at New Plymouth, 30 minutes after JV game ends
Tuesday, Dec. 5, home vs. Marsing, 30 minutes after JV A game ends

Junior varsity
Friday, Dec. 1 at Marsing, 30 minutes after first game ends
Saturday, Dec. 2 at New Plymouth, 30 minutes after freshman game ends
Tuesday, Dec. 5, home vs. Marsing, 30 minutes after first game ends

Freshman
Friday, Dec. 1 at Marsing, 4:45 p.m.
Saturday, Dec. 2 at New Plymouth, 4:45 p.m.
Tuesday, Dec. 5, home vs. Marsing, 4:45 p.m.

WRESTLING

Monday, Dec. 4 at Melba Jamboree

BOYS BASKETBALL

Varsity
Thursday, Nov. 30, home vs. Marsing, 30 minutes after JV A game ends
Friday, Dec. 1, home vs. Parma, 30 minutes after JV A game ends
Saturday, Dec. 2 at New Plymouth, 30 minutes after JV A game ends
Tuesday, Dec. 5 at Cole Valley Christian, 30 minutes after JV A game ends

Junior varsity
Thursday, Nov. 30, home vs. Marsing, 30 minutes after first game ends
Friday, Dec. 1, home vs. Parma, 30 minutes after freshman game ends
Saturday, Dec. 2 at New Plymouth, 30 minutes after freshman game ends
Tuesday, Dec. 5 at Cole Valley Christian, 30 minutes after first game ends

Freshman
Thursday, Nov. 30, home vs. Marsing, 4:45 p.m.
Friday, Dec. 1, home vs. Parma, 4:45 p.m.
Saturday, Dec. 2 at New Plymouth, 4:45 p.m.
Tuesday, Dec. 5 at Cole Valley Christian, 4:45 p.m.

√ Trojans

week's end) nailed six of their nine free throws and out-rebounded

Cole Valley behind five boards from Mandy Brasher.

Katie Sacht, a 5-foot-4 junior guard, led the Chargers (1-5) with eight points.

Marsing Huskies

GIRLS BASKETBALL

Varsity & Junior Varsity Teams
Thursday, Nov. 30, home vs. Nyssa, Ore., 4:45 p.m.
Friday, Dec. 1, home vs. Homedale, 4:45 p.m.
Tuesday, Dec. 5 at Homedale, 4:45 p.m.

BOYS BASKETBALL

Varsity & Junior Varsity
Thursday, Nov. 30, home vs. Marsing, 4:45 p.m.
Monday, Dec. 4 at Greenleaf Friends Academy, 6 p.m.

WRESTLING

Monday, Dec. 4 at Melba Jamboree

NAPA AUTO PARTS
OWYHEE AUTO SUPPLY
337-4668

HOMEDALE CHIROPRACTIC CENTER
J. Edward Perkins, Jr. D.C.
337-4900

Farm Bureau Insurance Company
337-4041

Matteson's
337-4664

Owyhee Family Dental Center
a family oriented practice
New Patients Always Welcome
337-4383

SPECIALTY INC. WOOD PRODUCTS
573-2133

BOWEN & PARKER
337-3271

The Owyhee Avalanche
337-4681

Tires LES SCHWAB
337-3474

PAUL'S

CAMPBELL TRACTOR CO
337-3142

Auto Body By Alan
337-4837

Snake River Co. LLC
337-3115

Owyhee Publishing
337-4866

PICK UP THE PACE
30 Minute Workout for Women
337-4040

Marsing Hardware & Pump
896-4162

NAPA AUTO PARTS
896-4185

SHOWALTER CONSTRUCTION
CAN YOU DIG IT?
896-4331

Snake River Mart
896-4222

The Owyhee Avalanche

Sports

PREP GIRLS BASKETBALL STATISTICS

Homedale Trojans
Scoring G 2FG 3FG FTM-FTA Pct. Points PPG
Corta 2 1 0 4-9 .444 6 3.0
Warwick 2 2 3 0-0 .000 13 6.5
Wheeler 2 2 0 2-8 .250 6 3.0
Tackett 2 0 1 1-2 .500 4 2.0
Johnson 2 4 0 0-5 .000 8 4.0
J. Hall 2 0 0 0-0 .000 0 0.0
Marks 2 2 0 1-3 .333 5 2.5
C. Hall 1 0 0 2-2 1.000 2 2.0
Mackenzie 2 2 1 1-5 .200 8 4.0
Rupp 2 2 0 1-2 .500 5 2.5
Brown 2 0 0 0-0 .000 0 0.0
Brasher 2 2 0 1-6 .167 5 2.5
Totals 2 17 5 13-42 .310 62 31.0

Other stats G OReb. DReb. RPG Steals Assists
Corta 2 0 0 0.0 2 3
Warwick 2 4 6 5.0 0 0
Wheeler 2 3 3 3.0 0 1
Tackett 2 1 1 1.0 0 1
Johnson 2 1 0 0.5 2 5
J. Hall 2 0 0 0.0 1 0
Marks 2 0 5 2.5 0 0
C. Hall 1 0 0 0.0 0 0
Mackenzie 2 0 2 1.0 0 0
Rupp 2 1 5 3.0 0 1
Brown 2 1 4 2.5 0 0
Brasher 2 1 2 1.5 0 0
Totals 2 12 28 20.0 5 11

Note — Doesn't include Nov. 16 vs. Parma or Nov. 21 vs. Cole Valley Christian

Marsing Huskies
Scoring G 2FG 3FG FTM-FTA Pct. Points PPG
Wilson 2 6 0 1-2 .500 13 6.5
Roeser 2 4 0 1-2 .500 9 4.5
Beckstead 2 5 0 5-6 .833 15 7.5
Moreno 2 6 2 4-6 .667 22 11.0
Zanardi 2 1 0 2-5 .400 4 2.0
Staudenmier 2 0 0 0-0 .000 0 0.0
Chenoweth 2 1 0 0-0 .000 2 1.0
Clausen 2 3 0 2-2 1.000 8 4.0
Totals 2 26 2 15-23 .652 73 36.5

Other stats G OReb. DReb. RPG Assists Steals
Wilson 2 2 8 5.0 4 7
Roeser 2 1 4 2.5 2 2
Beckstead 2 0 4 2.0 3 1
Moreno 2 2 3 2.5 4 6
Zanardi 2 2 8 5.0 0 5
Staudenmier 2 0 0 0.0 1 0
Chenoweth 2 0 3 1.5 5 7
Clausen 2 4 5 4.5 2 0
Totals 2 11 35 23.0 21 28

Note — Doesn't include Nov. 21 vs. Greenleaf Friends Academy

Rimrock Raiders
Scoring G 2FG 3FG FTM-FTA Pct. Points PPG
E. Cantrell 4 8 10 2-3 .667 48 12.0
Chandler 3 10 4 0-2 .000 32 10.7
Merrick 3 2 0 0-0 .000 4 1.3
Murray 4 10 1 3-7 .429 26 6.5
A. Cantrell 3 9 0 2-5 .400 20 6.7
Thurman 4 27 0 9-13 .692 63 15.8
Zaragoza 3 1 0 0-0 .000 2 0.7
Gennette 1 2 0 0-0 .000 4 4.0
Ridley 1 0 0 0-0 .000 0 0.0
Richardson 1 0 0 0-0 .000 0 0.0
Totals 4 69 15 16-30 .533 199 49.8

Other stats G OReb. DReb. RPG Assists Steals
E. Cantrell 4 8 18 6.5 10 16
Chandler 3 3 4 2.3 9 9
Merrick 3 2 6 2.7 8 3
Murray 4 4 19 5.8 13 9
A. Cantrell 3 11 16 9.0 5 1
Thurman 4 17 12 7.3 4 3
Zaragoza 3 8 4 4.0 1 1
Gennette 1 2 2 4.0 0 0
Ridley 1 0 0 0.0 0 0
Richardson 1 0 0 0.0 0 1
Totals 4 55 81 34.0 50 43

PREP STANDINGS

Girls basketball
3A SRV Conf. All W L W L
Fruitland 0 0 2 0
Homedale 0 0 1 3
McCall-Donnelly 0 0 2
Payette 0 0 1 3
Weiser 0 0 2 1

This week's games

Thursday
Payette at Parma
Melba at Fruitland
Friday
New Plymouth at Weiser
Fruitland at La Grande, Ore.
Grangeville at McCall-Donnelly
Saturday
Homedale at New Plymouth

Horseshoe Bend at Payette
Tuesday
Marsing at Homedale
Weiser at Baker City, Ore.
Nampa Christian at Fruitland
Payette at Melba

Last week's scores
Tuesday, Nov. 21
Homedale 51, Cole Valley Chr. 32
Melba 58, Payette 24
New Plymouth 52, Weiser 48

2A WIC Conf. All W L W L
Cole Valley Chr. 0 0 1 5
Marsing 0 0 1 2
Melba 0 0 2 1
Nampa Christian 0 0 1 2
New Plymouth 0 0 2 1
Parma 0 0 2 1

This week's games

Today
Cascade at Cole Valley Christian
Thursday
Payette at Parma
Melba at Fruitland
Nampa Christian at Ontario, Ore.
Vale, Ore., at New Plymouth
Friday
New Plymouth at Weiser
Nyssa, Ore., at Marsing
Saturday
Homedale at New Plymouth
Nampa Christian at Glens Ferry
Tuesday
Marsing at Homedale
Nampa Christian at Fruitland
Payette at Melba
Nyssa, Ore., at Parma
New Plymouth at Vale, Ore.

Last week's scores

Tuesday, Nov. 21
Greenleaf Friends Academy 33, Marsing 22
Homedale 51, Cole Valley Christian 32
Melba 58, Payette 24
Garden Valley 64, Nampa Christian 27
New Plymouth 52, Weiser 48

1A WIC Conf. All W L W L
Gem State Adv. 0 0 1 2
Greenleaf FA 0 0 1 2
Idaho City 0 0 2 1
Liberty Charter 0 0 2 0
Notus 0 0 0 4
Rimrock 0 0 4 0
Wilder 0 0 0 1

This week's games

Thursday
Wilder at Rimrock
Liberty Charter at Gem State Adventist
Idaho City at Greenleaf Friends Academy
Friday
Tri-Valley at Notus
Wilder at Council
Saturday
Idaho City at Tri-Valley
Monday
Gem State Adventist at Rimrock
Notus at Wilder
Liberty Charter at Idaho City
Tuesday
Horseshoe Bend at Gem State Adventist
Cascade at Greenleaf Friends Academy

Last week's scores

Tuesday, Nov. 21
Greenleaf Friends Academy 33, Marsing 22
Council 47, Notus 13

High Desert Conf. All W L W L
East W L W L
Adrian 0 0 0 0
Burnt River 0 0 0 0
Crane 0 0 0 0
Harper 0 0 0 0
Huntington 0 0 0 0
West W L W L
Dayville-Mon. 0 0 0 0
Mitchell 0 0 0 0
Prairie City 0 0 0 0
Spray 0 0 0 0
Ukiah 0 0 0 0

This week's games

Thursday
Mt. Bachelor at Dayville-Monument
Friday
Adrian, Jordan Valley at Adrian Tip-Off Tournament
Dayville-Monument, Mitchell at Condon-Wheeler Tournament
Ukiah, Prairie City at Echo Tournament
Saturday
Adrian, Jordan Valley at Adrian Tip-Off Tournament
Dayville-Monument, Mitchell at Condon-Wheeler Tournament
Ukiah, Prairie City at Echo Tournament
Tuesday
Spray at Colton Tournament
Mt. Bachelor at Mitchell

Boys basketball

3A SRV Conf. All W L W L
Fruitland 0 0 0 0
Homedale 0 0 0 0
McCall-Donnelly 0 0 0 0
Payette 0 0 0 0

Weiser 0 0 0 0

This week's games

Thursday
Marsing at Homedale
Ontario, Ore., at Weiser
Parma at Payette
Friday
Parma at Homedale
Weiser at Melba
Fruitland at Columbia
Saturday
Homedale at New Plymouth
Payette at Nampa Christian
McCall-Donnelly at Orofino
Tuesday
Homedale at Cole Valley Christian
Ontario, Ore., at Payette

2A WIC Conf. All W L W L
Cole Valley Chr. 0 0 0 0
Marsing 0 0 0 0
Melba 0 0 0 0
Nampa Christian 0 0 0 0
New Plymouth 0 0 0 0
Parma 0 0 0 0

This week's games

Thursday
Marsing at Homedale
Parma at Payette
Notus at Cole Valley Christian
Friday
Parma at Homedale
Weiser at Melba
Cascade at Cole Valley Christian
Saturday
Homedale at New Plymouth
Payette at Nampa Christian
Liberty Charter at Cole Valley Christian
Monday
Marsing at Greenleaf Friends Academy
Tuesday
Homedale at Cole Valley Christian
Melba at Nyssa, Ore.

1A WIC Conf. All W L W L
Gem State Adv. 0 0 0 0
Greenleaf FA 0 0 0 0
Idaho City 0 0 0 0
Liberty Charter 0 0 0 0
Notus 0 0 0 0
Rimrock 0 0 0 0
Wilder 0 0 0 0

This week's games

Today
Liberty Charter at Glens Ferry
Thursday
Notus at Cole Valley Christian
Gem State Adventist at Cascade
Garden Valley at Idaho City
Council at Liberty Charter
Saturday
Liberty Charter at Cole Valley Christian
Horseshoe Bend at Gem State Adventist
Idaho City at Tri-Valley
Monday
Marsing at Greenleaf Friends Academy
Tuesday
Owyhee, Nev., at Rimrock
Gem State Adventist at Jordan Valley

Notus at Tri-Valley
Idaho City at Garden Valley
Council at Wilder

High Desert Conf. All W L W L
East W L W L
Adrian 0 0 0 0
Burnt River 0 0 0 0
Crane 0 0 0 0
Harper 0 0 0 0
Huntington 0 0 0 0
Jordan Valley 0 0 0 0
West W L W L
Dayville-Mon. 0 0 0 0
Mitchell 0 0 0 0
Prairie City 0 0 0 0
Spray 0 0 0 0
Ukiah 0 0 0 0

This week's games

Wednesday
South Wasco County at Spray
Thursday
Mt. Bachelor at Dayville-Monument
Friday
Adrian, Jordan Valley at Adrian Tip-Off Tournament
Dayville-Monument, Mitchell at Condon-Wheeler Tournament
Ukiah, Prairie City at Echo Tournament
Saturday
Adrian, Jordan Valley at Adrian Tip-Off Tournament
Dayville-Monument, Mitchell at Condon-Wheeler Tournament
Ukiah, Prairie City at Echo Tournament
Tuesday
Spray at Condon-Wheeler
Gem State Adventist at Jordan Valley
Mt. Bachelor at Mitchell
Burns JV at Prairie City

PREP RESULT
Girls basketball

Rimrock 54

Cole Valley Christian 42
RIMROCK (54)
Murray 0-3 (0-1) 3-7 3, E. Cantrell 1-10 (0-3) 2, A. Cantrell 6-7 (0-0) 2-3 14, Chandler 1-4 (1-4) 3-4 8, Merrick 0-3 (0-0) 0-0 0, Thurman 10-15 (0-0) 5-8 25, Zaragoza 1-1 (0-0) 0-0 2. Totals 20-47 (1-8) 13-22 54
COLE VALLEY (42)
Moulin 0-0 (0-0) 0-0 0, Hilbrands 0-1 (0-0) 0-0 0, Sacht 2-4 (1-1) 5, DeGroot 5-11 (0-0) 0-0 10, Johnson 1-1 (0-0) 2-4 4, DeMers 3-6 (0-1) 6, Welsh 1-1 (0-0) 1-2 3, JulieAnne Chandler 2-6 (0-0) 0-0 4, Feil 5-8 (0-0) 0-0 10. Totals 19-38 (1-2) 3-6 42
Rimrock 12 12 15 15 — 54
Cole Valley 9 4 12 17 — 42
Rebounds — Rim 27 (E. Cantrell 7), CV 23 (DeMers 8). Turnovers — Rim 21, CV 31. Total fouls — Rim 13, CV 23. Fouled out — None. Technical fouls — None. Assists — Rim 8 (E. Cantrell 3), CV 10 (Sacht 6). Steals — Rim 11 (E. Cantrell 6), CV 8 (Hilbrands 2). Blocked shots — Rim 0, CV 1 (Feil)

Raiders

man and Anna Cantrell dominated Nov. 20 against former 1A WIC opponent Cole Valley Christian in the Raiders' 54-42 victory in Meridian.

"The two freshman posts controlled the game," Rimrock coach Mike Chandler said. "(Cole Valley) denied the outside shot, so we took what they gave us." "It was a great overall performance."

Thurman poured in 25 points, and Cantrell added 14 on 6-for-7 shooting from the floor.

The Raiders (4-0 overall at week's end) led 24-13 at half-time.

Cole Valley, which is playing its first season at the 2A level,

was paced by Janylyn DeGroot and Chelsea Feil, both of whom scored 10 points.

Shelby Chandler kicked in another eight points for Rimrock.

The Raiders' 1A WIC campaign begins Thursday at home against Wilder. Rimrock plays host to Caldwell's Gem State Adventist on Monday.

At the end of the week, Thurman was the Raiders' leading scorer, pouring in an average of 15.8 points a night. She also was pulling down 7.3 rebounds per contest. Cantrell, who logged time in only three of the Raiders' first four games, leads the team with 9 rebounds per game.

Ellie Cantrell is the second-leading scorer with 12 points per game, while Chandler is scoring 10.7 points a contest.

Commentary

Baxter Black, DVM



On the edge of common sense

Bear picture

Sammi is one of those children for which parents have great expectations but a healthy dose of apprehension. In other words, her self-confidence was bound to get her into trouble now and then.

As a 13-year-old ranch kid, she could rope and ride, do the chores, cook, read, shoot and take care of herself like most kids reared up in a country raisin'.

The family was over-nighting at one of the line camps on the forest. Sammi and her girlfriend had gone down to the creek to fish. She had been to the same camp many times and was aware of the wildlife precautions. Signs had been posted warning of bears in the area, and her mother had reiterated the message to her.

Knee-deep in the creek, the girls soon became absorbed in girl talk as they walked downstream nonchalantly casting and reeling as they chattered like squirrels about boys, teachers, music, clothes, volleyball, boys, teachers, music, clothes, volleyball, boys, teachers, music, etc. Suddenly Sammi screamed!

"Run!" she shouted, "There's a bear!"

The two girls dropped their rods and splashed to the bank, both shrieking at the top of their lungs! They raced to the camp where her mother sat in front of the tent. She was making sandwiches for lunch.

"Mom, there's a bear, right down by the creek. Biggest one I ever saw! Right on the bank! Climbing a tree!"

"Settle down," said Mom, "Take a deep breath. First, are you hurt, either of you?"

"No! We ran as fast as we could. He was huge, climbing a tree!"

"Are you sure it was a bear?" asked Mom.

"Yes! We were this close! I could draw you a picture!" said Sammi. "I've seen bears before, I know what a bear looks like! I could draw you a picture!"

"Did you see him, too?" Mom asked Sammi's friend.

"I...I think so," she said, "It all happened so fast,"

"Let's go look," said Mom, taking the .30.30 out of the pickup. They backtracked to the creek and walked up the near side till they heard rustling.

"There he is!" pointed Sammi.

Shore 'nuf, a large brown beast was moving among the sycamores and willers along the opposite bank. It stopped in front of a large trunk and raised its head up into the leafy foliage to graze.

"Maybe," said the wise ol' mom, "when you draw the picture you can get her brand a little higher on the hip."

Letters to the editor

All letters to the editor submitted to The Owyhee Avalanche must be no longer than 300 words, signed and include the writer's address and daytime phone number.

The deadline for submitting letters is noon on Friday. Letters can be submitted in the these ways:

- E-mailed to jbrowneditor@cableone.net
- Faxed to (208) 337-4867
- Mailed to P.O. Box 97, Homedale ID, 83628
- Dropped off at the Avalanche office at 19 E. Idaho Ave., in Homedale

For more information, call (208) 337-4681.

Wayne Cornell

Not important ... but possibly of interest

A Thanksgiving wish

Wayne Cornell submitted this column on the day before Thanksgiving.

— Ed.

Thanksgiving allegedly originated when the Pilgrims, after almost starving to death their first winter in the New World, celebrated their survival by sitting down to a feast with some of the natives who had helped them through the tough times. I don't think Indian participation in this annual event continued for very long because within a few years most of the neighboring tribes were either killed off by diseases brought by the white settlers or by lead poisoning — also provided by the newcomers. Just goes to show what happens when you don't have tough zoning laws.

When I was growing up, Thanksgiving was a day when the country pretty much shut down for a day. It was even tough to find an open gas station. Thanksgiving was set aside for the gathering of the clans — grandparents and their children and their children's children — celebrating the passage of another year. Unlike Christmas, and all the distractions associated with that holiday, Thanksgiving was a time for reinforcing family bonds.

Today, with family members often scattered all over the country or the world, Thanksgiving isn't as special for many people. Much of the retail world is open for business — hoping to squeeze a few more dollars out of consumers. A lot of Americans spend the day shopping, working, or doing the same activities they would be doing on any weekend.

In our family, we still have a traditional Thanksgiving. This year, we will gather at my sister's house. There will be a big turkey and all the trimmings. After dinner, we will adjourn to the living room. There will be conversation about what everyone is doing and planning during the coming year.



But sometime during the afternoon, when everyone is trying to fight off the sleep-inducing qualities of the turkey, I can almost guarantee my mind will drift back to Thanksgivings celebrations long past.

Wouldn't it be nice if Thanksgiving was a day when each person is granted one wish? I would lean back on my sister's couch and close my eyes. When I opened them, Dad would be sitting next to me watching the football game on TV. Mom would be in the next room directing the after-dinner cleanup, chattering instructions, ignoring my sister's order to sit down and take it easy.

I would interrupt Mom's fussing, escort her to the living room, and sit her down with Dad. When I had their attention, I would reintroduce them to their granddaughters, now grown women, and to our sons-in-law. Then I would present them to Amazing Grace, their great granddaughter. Mom would immediately sweep Gracie up, hug her and probably get teary-eyed. Dad wouldn't say much but he would have one of his "pleased enough to bust my buttons" expressions on his face.

Then, when things quieted down a little, I would try to bring Mom and Dad up to date on the past 28 years — what has happened in the family, the places we have been — the good times and the bad times — the accomplishments and the failures. There would be a lot to cover, and I'm sure I would forget some things. But I would make sure I told them how often I still think of them — especially on Thanksgiving.

Actually, there isn't any need to be wishing. I'm sure that when we sit down for Thanksgiving dinner, Mom and Dad will be there, too — watching and listening — just as they have done every day since they left us.

The world may be changing. But for me, Thanksgiving always will be about family.

Idaho Agriculture

Biofuel production would benefit Idaho

by Frank Priestley

Big Oil continues to rake in big bucks, much to the detriment of American consumers. Exxon Mobil, the world's largest oil company, posted third-quarter earnings of \$10.49 billion, the second-largest quarterly profit ever recorded by a publicly traded U.S. company.

Meanwhile, recently the Idaho chapter of the American Automobile Association (AAA) announced that Idaho gas prices have been as much as 28 cents per gallon above the national average.

There are dozens of reasons spewed by Big Oil executives to justify exorbitant prices, but the bottom line in our view is two-fold: First, state political leaders need to take notice of the fact that Idaho families have been getting gouged at the gas pumps for two years now with prices peaking at close to \$3.50 per gallon in August; and second, timing couldn't be better for the aggressive development of alternative energy sources.

Alternative fuels, including ethanol and biodiesel are renewable, sustainable and can be domestically produced, relieving our nation's addiction to foreign crude oil. The production of these fuels creates manufacturing jobs, expands domestic agriculture markets, improves the nationwide balance of trade and reduces air pollution.

Currently, there are six states with legislation in place to help increase use of biofuels. Minnesota and Hawaii have state renewable fuel standards in place that require the blending of biofuels with regular gasoline at all stations. Indiana, Illinois and Pennsylvania provide retailer and other tax credits for biofuel sales. Washington provides production and distribution incentives.

However, Idaho, a state with more potential than almost anyplace in the world for cellulosic ethanol production, is yet to offer any incentives that would give this business a jump start. Cellulosic ethanol, in Idaho's case, comes from straw, a byproduct left over after wheat and barley are harvested. The reason Idaho is prime for this opportunity is because Idaho farmers plant nearly 2 million acres of wheat and barley every year. The raw product is cheap and abundant.

The question of why a business with such great potential in our state should need government help gets us back to Big Oil. After a wave of mergers in the late 1990s, there are only six companies left in control of the single resource (oil) that powers the world economy. All of these giant companies have a downstream sector, refining and distribution, and an upstream sector, exploration and development. Each sector boosts prices and takes in profits, which are substantial. During the 1970s gas crunch, alternative energy development was underway, but as soon as Big Oil got nervous about competition they dropped prices, which effectively killed biofuel development. This is just one of many examples of how these incredibly rich and powerful companies destroy their competitors.

Now with a new wave of alternative energy development underway we have a chance to break, or at least loosen, Big Oil's chokehold on the market by using tax and other production incentives, and passing laws that promote competition in the marketplace. It's time for the state of Idaho to tell Big Oil to back off.

— Frank Priestley is president of the Idaho Farm Bureau.

Public notices

OWYHEE COUNTY COMMISSIONERS MINUTES NOVEMBER 13, 2006 OUYHEE COUNTY COURTHOUSE MURPHY, IDAHO

Present were Commissioner's Tolmie, Reynolds, and Salove, Clerk Sherburn, Sheriff Aman, Treasurer Richards, Prosecutor Faulks, and Fred Grant.

The Board amended the agenda to include CAT Board Nomination, Findings on Grievance Hearing, and approval of Scotch Bob Creek project.

The Board approved CB Trucking to complete the removal of debris from Scotch Bob Creek caused by flooding, in the amount of \$15,600.

George Bennett met with the Board concerning deadlines for crop insurance being imposed by the USDA. The Board approved intervention by legal council.

The Board approved HOG Heaven Subdivision Plat.

The Board adopted Resolution 06-45 Destruction of Semi-Permanent Records.

The Board approved the Road Maintenance Agreement with Twin Falls County.

The Board approved a letter to BLM on the appraisal of Elephant Butte.

The Board adopted Resolution 06-44 requesting a site advisory team to provide a suitability determination on an expanded CAFO application by DeRuyter Dairy.

Jens Schkade met with the Board to discuss his application for a Road Rally. The Board will consider the request after the private property owners have had a chance to respond.

Shelly McCoshum with Department of Juvenile Corrections requested an MOA for grant money available for mental health. The Board approved the request.

The Board approved Matt Beebe to reappointment to the Catastrophic Health Care Board.

The Board approved the Findings for the Personnel Grievance Hearing.

The Treasurer presented the Joint Quarterly Report for the 4th quarter.

The Board approved the minutes.

Dated this 20th day of November 2006

/s/Hal Tolmie
Attest: /s/Charlotte Sherburn
11/29/06

NOTICE OF SALE CASE NO. CV-06-05481 IN THE DISTRICT COURT OF THE THIRD JUDICIAL DISTRICT OF THE STATE OF IDAHO, IN AND FOR THE COUNTY OF OWYHEE

CITIMORTGAGE, INC., successor in interest to Principal Residential Mortgage, Inc., Plaintiff,

Vs.
JAMES H. CONRAD (Deceased) and/or the Unknown Heirs, Assigns & Devises of James H. Conrad; and DOES 1-10 as individuals with an interest in the real property legally described as:

Lot 20 in Block 9 of the Sunset Ranch Subdivision, part of the north half of the Southeast quarter and the Southwest quarter of the Northeast quarter of Section 36, Township 4 North, Range 6 West, Boise Meridian, Owyhee County, Idaho, according to the official plat thereof and of record in the

office of the recorder for Owyhee County, Idaho.

Commonly known as: Route 1, Box 3026, Homedale, Idaho, 83628, Defendants.

Under and by virtue of an Order of Sale of Foreclosure entered on October 26, 2006 and Writ of Execution issued on October 18, 2006 out of and under the seal of the above-entitled Court on the Judgment and Decree of Foreclosure recovered in said Court in the above-entitled action on the 13th day of July, 2006, in favor of the above-named Plaintiff, I am commanded and required to proceed to notice for sale to sell at public auction the real property described in said Order for Sale of Foreclosure and Writ of Execution and to apply the proceeds of such sale to the satisfaction of said Judgment and Decree of Foreclosure with interest thereon and my fees and costs.

The property directed to be sold is situate in Owyhee County, State of Idaho, and is described as follows, to-wit:

Lot 20 in Block 9 of the Sunset Ranch Subdivision, part of the north half of the Southeast quarter and the Southwest quarter of the Northeast quarter of Section 36, Township 4 North, Range 6 West, Boise Meridian, Owyhee County, Idaho, according to the official plat thereof and of record in the office of the recorder for Owyhee County, Idaho.

Commonly known as: Route 1, Box 3026, Homedale, Idaho, 83628.

NOTICE IS HEREBY GIVEN that on the 19th day of December, 2006 at the hour of 2:00 o'clock p.m., at the location of the Owyhee County Courthouse, 20381 State Highway 78, Murphy, Idaho, I will attend, offer and sell at public auction all or so much of the above-described property thus directed to be sold as may be necessary to raise sufficient funds to pay and satisfy the Judgment and Decree of Foreclosure as set out in said Order for Sale of Foreclosure to the highest bidder therefore in lawful money. The time period for redemption of the above property is six (6) months from the date of sale herein.

The Sheriff, by a Certificate of Sale, will transfer right, title and interest of the judgment debtor in and to the property. The Sheriff will also give possession but does no guarantee clear title nor continue possessory right to the purchaser.

DATED This 15th day of November, 2006

GARY AMAN, OWYHEE COUNTY SHERIFF
By: /s/Richard Freund, Deputy Sheriff
11/29;12/6,13/06

SHERIFF'S NO. 20065889 CASE NO. CV 06-3354 IN THE DISTRICT COURT OF THE FIFTH JUDICIAL DISTRICT OF THE STATE OF IDAHO, IN AND FOR THE COUNTY OF TWIN FALLS

METROPOLITAN LIFE INSURANCE COMPANY, a New York corporation, Plaintiff,

vs.
CUMMINS FARMS, INC., et al., Defendant's.

Under and by virtue of an ORDER OF SALE issued on the 13th day of November, 2006, out of and under the seal of the above-entitled Court on the Adjudication and Decree of Foreclosure recovered in said Court in the

above-entitled action on the 2nd day of November, 2006, in favor of the above-named Plaintiff, I am commanded and required to proceed to notice for sale and to sell at public auction the property described in said Order of Sale and to apply the proceeds of such sale to the satisfaction of said Adjudication and Decree of Foreclosure with interest thereon and my fees and costs.

The property directed to be sold is situate in Twin Falls County, State of Idaho; Cassia County, State of Idaho; Blaine County, State of Idaho; and, Owyhee County, State of Idaho and is described in Exhibits A and B hereto.

NOTICE IS HEREBY GIVEN, that on the 12th day of December, 2006, at the hour of 9:00 o'clock a.m. on the front steps of the Twin Falls County Courthouse in Twin Falls, I will attend, offer and sell at public auction all or so much of the above-described property thus directed to be sold as may be necessary to raise sufficient funds to pay and satisfy the Adjudication and Decree of Foreclosure as set out in said ORDER OF SALE to the highest bidder therefore in lawful money of the United States of America.

Dated this 15th day of November, 2006

Wayne Tousley, Sheriff of Twin Falls County

J. Walter Sinclair, ISB No. 2243, Email: jwsinclair@stoel.com, Bradley J. Dixon, ISB No. 6167

Email: bjdixon@stoel.com, STOEL RIVES LLP, 101 S. Capitol Blvd., Ste. 1900, Boise, Idaho 83702, Phone: (208) 389-9040 Fax: (208) 389-7500; Andrew A. Guy (Admitted Pro Hac Vice), Email: aaguy@stoel.com, STOEL RIVES LLP, One Union Square, 600 University St., Ste. 1600, Seattle, WA 98101, Phone: (206) 624-0900 Fax: (206) 386-7500, Attorneys for Plaintiff

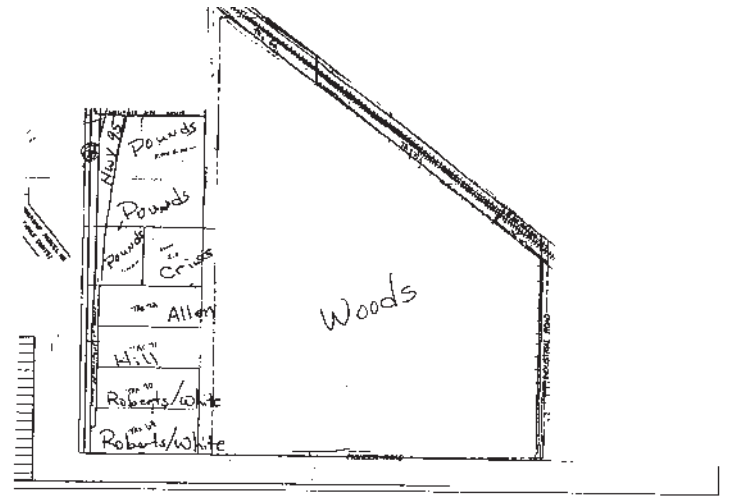
Exhibit A

The land referred to in this Decree is described as follows:

Twin Falls County

A
Township 10 South, Range 19 East, Boise Meridian, Twin Falls County, Idaho, Section 27: W $\frac{1}{2}$ NW $\frac{1}{4}$ SUBJECT TO Highway District right of way. Township 10 South, Range 19 East, Boise Meridian, Twin Falls County, Idaho, Section 28: N $\frac{1}{2}$; N $\frac{1}{2}$ N $\frac{1}{2}$ SE $\frac{1}{4}$, and that part of the NE $\frac{1}{4}$ SW $\frac{1}{4}$ more particularly described as follows: BEGINNING at the Northeast corner of said NE $\frac{1}{4}$ SW $\frac{1}{4}$; THENCE West along the North line thereof a distance of 820 feet; THENCE South along a line parallel with the East line thereof a distance of 270 feet; THENCE East along a line parallel with the North line thereof a distance of 820 feet to a point on the East line thereof; THENCE North along said East line a distance of 270 feet to the POINT OF BEGINNING. SUBJECT TO Highway District right of way

B
Township 11 South, Range 19 East, Boise Meridian, Twin Falls County, Idaho, Section 27: A part of the SE $\frac{1}{4}$ SE $\frac{1}{4}$ more particularly described as follows: BEGINNING at the Southeast corner of said Section 27; THENCE North 480 feet to the TRUE POINT OF BEGINNING; THENCE West 200 feet; THENCE North 240 feet; THENCE East 200 feet; THENCE South 240 feet to the TRUE POINT OF



NOTICE OF PUBLIC HEARING

Please be advised that a public hearing will be held before the Homedale Mayor and City Council on the 18th day of December, 2006 at 6:00 p.m. at Homedale City Hall, 31 West Wyoming, Homedale, Idaho.

The subject matter of this hearing is the annexation of certain lands into the city limits of Homedale as follows:

Property Description	Owner
Tax 69	Bryce Roberts/Taryn White
Tax 70	Bryce Roberts/Taryn White
Tax 71	Cecil & Evelyn Hill
Tax 72	Bob Allen
See attached map	Pounds Farm, LLC
See attached map	Randy & Christina Criss
See attached map	Ron & Julie Woods

The public is invited to attend and offer input.
Alice E. Pegram, City Clerk
City of Homedale
11/29;12/6/06

BEGINNING.

C
PARCEL NO. 2: Township 10 South, Range 19, East, Boise Meridian, Twin Falls County, Idaho

Section 29: The S $\frac{1}{2}$; S $\frac{1}{2}$ NE $\frac{1}{4}$ and all that part of the S $\frac{1}{2}$ NW $\frac{1}{4}$ lying South of the Twin Falls Canal Company; EXCEPT that part of the SW $\frac{1}{4}$ NE $\frac{1}{4}$ which lies North of and below the center of the Main Canal of the Twin Falls Canal Company. AND EXCEPT that portion of the S $\frac{1}{2}$ NE $\frac{1}{4}$ and the N $\frac{1}{2}$ SE $\frac{1}{4}$ described as follows: BEGINNING at the East quarter corner of said Section 29; THENCE running North 0°03' West along the Section line 1320 feet to the Northeast corner of the SE $\frac{1}{4}$ NE $\frac{1}{4}$ of said Section 29; THENCE North 89°54' West along the North line of the S $\frac{1}{2}$ NE $\frac{1}{4}$ of said Section 29 a distance of 2045 feet;

THENCE South 48°37' West 577 feet; THENCE South 0°03' East 939 feet; THENCE South 9°46' East 260.3 feet; THENCE South 39°4 $\frac{1}{2}$ ' East 175.5 feet; THENCE South 44°08' East 117.1 feet; THENCE South 44°07' East 129.6 feet; THENCE South 89°50' East 2155.5 feet to the East line of said Section 29;

THENCE North 0°03' West along the Section line 571 feet to the PLACE OF BEGINNING. SUBJECT TO Highway District right of way. AND ALSO EXCEPT: Township 10 South, Range 19, East, Boise Meridian, Twin Falls County, Idaho Section 29: A parcel of land in the N $\frac{1}{2}$ SE $\frac{1}{4}$ more particularly described as follows: COMMENCING at a stone marking the East quarter corner of said Section 29; THENCE running South 0°03' East along the section line for 476.0 feet;

THENCE North 89°54' West for 2245.6 feet to the TRUE POINT OF BEGINNING; THENCE North 89°54' West for 230.4 feet where a steel pin was found; THENCE North 0°43 $\frac{1}{2}$ ' West along a line previously described as bearing North 0°03' West for 476 feet, more or less, where a steel pin was found;

THENCE South 9°46' East for 260.3 feet; THENCE South 39°4 $\frac{1}{2}$ ' East for 175.5 feet; THENCE South 44°08' East for 117.1 feet to the TRUE POINT OF BEGINNING.

E
Township 10 South, Range 19, East, Boise Meridian, Twin Falls County, Idaho Section 29: A parcel of land in the N $\frac{1}{2}$ SE $\frac{1}{4}$ more particularly described as follows: COMMENCING at a stone marking the East quarter corner of said Section 29; THENCE running South 0°03' East along the section line for 476.0 feet; THENCE North 89°54' West for 2245.6 feet to the TRUE POINT OF BEGINNING; THENCE North 89°54' West for 230.4 feet where a steel pin was found; THENCE North 0°43 $\frac{1}{2}$ ' West along a line previously described as bearing North 0°03' West for 476 feet, more or less, where a steel pin was found; THENCE South 9°46' East for 260.3 feet; THENCE South 39°4 $\frac{1}{2}$ ' East for 175.5 feet; THENCE South 44°08' East for 117.1 feet to the TRUE POINT OF BEGINNING.

G
Township 11 South, Range 19 East, Boise Meridian, Twin Falls County, Idaho Section 24: NE $\frac{1}{4}$ NE $\frac{1}{4}$

EXCEPT that portion of the NE $\frac{1}{4}$ NE $\frac{1}{4}$ of Section 24, Township 11 South, Range 19 E., B.M., Twin Falls County, Idaho, lying South and East of the following described line: BEGINNING at a point on the North section line of said section which point lies West a distance of 58 feet from the northeast section corner of said Section; THENCE South 74°34' West a distance of 340 feet; THENCE South 52°40' West a distance of 233 feet; THENCE South 40°10' West a distance of 388 feet; THENCE South 1°24' East a distance of 789.8 feet, more or less, to the South boundary line of said NE $\frac{1}{4}$ NE $\frac{1}{4}$ which point is 858.7 feet, more or less, distant westerly from the east boundary

Public notices

line of said Section. SUBJECT TO Highway District right of way. Township 11 South, Range 19 East, Boise Meridian, Twin Falls County, Idaho Section 13: That part of the SE $\frac{1}{4}$ SE $\frac{1}{4}$ lying South of Murtaugh Lake EXCEPT that portion of the Southeast corner of the SE $\frac{1}{4}$ SE $\frac{1}{4}$ of Section 13, Township 11 South, Range 19 E., B.M., Twin Falls County, Idaho, described as follows: BEGINNING at the Southeast section corner of said Section 13; THENCE West 58 feet; THENCE North 51°33' East a distance of 73.8 feet to the east boundary line of said Section; THENCE South 46 feet, more or less, to the POINT OF BEGINNING.

H
PARCEL NO. 1 Township 10 South, Range 19 East, Boise Meridian, Twin Falls County, Idaho Section 29: That portion of the N $\frac{1}{2}$ NE $\frac{1}{4}$ lying South and East of the canal. SUBJECT TO Highway District right of way.

PARCEL NO. 2 Township 10 South, Range 19 East, Boise Meridian, Twin Falls County, Idaho Section 29: That portion of the S $\frac{1}{2}$ NE $\frac{1}{4}$ and N $\frac{1}{2}$ SE $\frac{1}{4}$ more particularly described as follows: BEGINNING at the East quarter corner of said Section 29; THENCE running North 0°03' West along the Section line 1320 feet to the Northeast corner of the SE $\frac{1}{4}$ NE $\frac{1}{4}$ of said Section 29; THENCE North 89°54' West along the North line of the S $\frac{1}{2}$ NE $\frac{1}{4}$ of said Section 29 a distance of 2045 feet; THENCE South 48°37' West 577 feet; THENCE South 0°03' East 939 feet; THENCE South 9°46' East 260.3 feet; THENCE South 39°4½ East 175.5 feet; THENCE South 44°08' East 117.1 feet; THENCE South 44°07' East 129.6 feet; THENCE South 89°50' East 2155.5 feet to the East line of said Section 29; THENCE North 0°03' West along the Section line 571 feet to the PLACE OF BEGINNING.

I
Township 10 South, Range 19 East, Boise Meridian, Twin Falls County, Idaho Section 27: A parcel of land located in the NW $\frac{1}{4}$ NE $\frac{1}{4}$ and the NE $\frac{1}{4}$ NW $\frac{1}{4}$ lying North of the Union Pacific Railroad Company right of way and West and South of the U.S. Highway 30 right of way, being more particularly described as follows:

FROM the Northwest corner of Section 27, Township 10 South, Range 19 E., B.M., a distance of 1323.18 feet on a bearing of South 88°52' East along the North line of said Section 27; THENCE a distance of 25.00 feet on a bearing of South 0°37' West to a point on the South right-of-way line of U.S. Highway 30, this being the POINT OF BEGINNING; THENCE from this point of beginning a distance of 527.10 feet on a bearing of South 0°37' West to a point on the North right-of-way line of the Union Pacific Railroad Company; THENCE a distance of 1760.25 feet on a bearing of South 83°41.5' East along the North right-of-way line of said railroad; THENCE a distance of 217.28 feet along a spiral curve to the right with a spiral angle of 2°06' along the North right-of-way line of said railroad; THENCE a distance of 244.02 feet along a circular curve to the right with a central angle of 4°43', a radius of 2964.8 feet, and a tangent of 122.10 feet along the North right-of-way line of said railroad to a point on the West right of way of U.S. Highway 30; THENCE a distance of 228.12

feet along a circular curve to the left in a Northwesterly direction with a central angle of 9°40', a radius of 1352.5 feet, and a tangent of 114.37 feet along the Southwest right-of-way line of U.S. Highway 30; THENCE a distance of 30.00 feet on a bearing of North 51°29.5' East along a Northwest right-of-way line of U.S. Highway 30; THENCE a distance of 1243.73 feet along a circular curve to the left in a Northwesterly direction with a central angle of 51°32.4', a radius of 1382.5 feet, and a tangent of 667.43 feet along the Southwest right-of-way line of U.S. Highway 30; THENCE a distance of 25.0 feet on a bearing of North 1°02.5' East along a West right-of-way line of U.S. Highway 30; THENCE a distance of 1018.42 feet on a bearing of North 88°52' West along the South right-of-way line of U.S. Highway 30 to the POINT OF BEGINNING.

M
Township 10 South, Range 19 East, Boise Meridian, Twin Falls County, Idaho Section 27: SW $\frac{1}{4}$ Section 28: S $\frac{1}{2}$ N $\frac{1}{2}$ SE $\frac{1}{4}$; S $\frac{1}{2}$ SE $\frac{1}{4}$; SW $\frac{1}{4}$ EXCEPT that portion of the NE $\frac{1}{4}$ SW $\frac{1}{4}$, more particularly described as follows: BEGINNING at the Northeast corner of said NE $\frac{1}{4}$ SW $\frac{1}{4}$; THENCE West along the North line thereof a distance of 820 feet; THENCE South along a line parallel with the East line thereof a distance of 270 feet; THENCE East along a line parallel with the North line thereof a distance of 820 feet to a point on the East line thereof; THENCE North along said East line a distance of 270 feet to the POINT OF BEGINNING. Section 33: ALL Section 34: W $\frac{1}{2}$ ALL SUBJECT TO Twin Falls County highway right of way. Township 11 South, Range 19 East, Boise Meridian, Twin Falls County, Idaho Section 3: Lots 3 and 4 and the SW $\frac{1}{4}$ NW $\frac{1}{4}$ Section 4: N $\frac{1}{2}$ ALL SUBJECT TO Twin Falls County Highway Right of Way.

Q
Township 11 South, Range 19 East, Boise Meridian, Twin Falls County, Idaho Section 26: Part of the NE $\frac{1}{4}$ SE $\frac{1}{4}$ more particularly described as follows: BEGINNING at the East quarter corner of Section 26, said corner marked by a \square rebar which shall be the POINT OF BEGINNING; THENCE South 00°00'00" East along section line for a distance of 600.00 feet to a $\frac{1}{2}$ " rebar; THENCE North 89°30'09" West for a distance of 225.00 feet to a $\frac{1}{2}$ " rebar; THENCE North 00°00'00" East for a distance of 600.00 feet to a $\frac{1}{2}$ " rebar on the North line of the NE $\frac{1}{4}$ SE $\frac{1}{4}$; THENCE South 89°30'09" East along the North line of the NE $\frac{1}{4}$ SE $\frac{1}{4}$ for a distance of 225.00 feet to the POINT OF BEGINNING. **SUBJECT TO** a 25-foot-wide county road right of way along the East side.

R
PARCEL NO. 5 Township 11 South, Range 19 East, Boise Meridian, Twin Falls County, Idaho Section 9: SE $\frac{1}{4}$ SUBJECT TO Highway District right of way.

PARCEL NO. 10-6 Township 11 South, Range 19 East, Boise Meridian, Twin Falls County, Idaho Section 12: All that part of the SW $\frac{1}{4}$ lying West of Highway No. 30, in Twin Falls County, Idaho EXCEPT a parcel of land located in the E $\frac{1}{2}$ SW $\frac{1}{4}$ more particularly described as follows: COMMENCING at the Southeast section corner of Section 12,

Township 11 South, Range 19 E., B.M.; THENCE North 68°25'55" West 3433.92 feet; THENCE South 89°42'15" West 11.04 feet to the REAL POINT OF BEGINNING; THENCE continuing South 89°42'15" West 349.96 feet; THENCE North 00°08'53" East 74.99 feet; THENCE North 89°51'15" East 25.00 feet; THENCE North 00°58'55" East 180.00 feet; THENCE North 87°41'50" East 198.01 feet; THENCE South 25°22'03" East 289.04 feet to the REAL POINT OF BEGINNING. **AND EXCEPT** BEGINNING at a point which is 25.0 feet North of the South quarter corner of Section 12, Township 11 South, Range 19 E., B.M., and lies at the intersection of the county road North right-of-way boundary with the East boundary line of the SW $\frac{1}{4}$ and Section 12; THENCE running North 89°29' West along said North right-of-way boundary 840.00 feet THENCE running North 45.0 feet; THENCE running North 89°29' West and parallel to said county road North right-of-way boundary 260.0 feet; THENCE running North 545.0 feet THENCE running South 89°29' East and parallel to said road North right-of-way boundary 891.2 feet, more or less, to the intersection with the South right-of-way boundary of U.S. Highway No. 30; THENCE running Southeasterly along said South U.S. Highway No. 30 right-of-way boundary on a 3° curve 281.0 feet, more or less, to the point of intersection with the East boundary of the SW $\frac{1}{4}$ of said Section 12; THENCE running South along the boundary of said SW $\frac{1}{4}$ 391.9 feet, more or less, to the POINT OF BEGINNING. **AND EXCEPT**

That part of the SW $\frac{1}{4}$ of Section 12, Township 11 South, Range 19 E., B.M., more particularly described as follows: COMMENCING at the Southwest corner of Section 12; THENCE 932 feet East along the South boundary of the SW $\frac{1}{4}$ of Section 12; THENCE North parallel to the West boundary of the SW $\frac{1}{4}$ of Section 12, 466 feet; THENCE West 932 feet, more or less, parallel to the South boundary of the SW $\frac{1}{4}$ of Section 12; THENCE South along the West boundary 466 feet to the POINT OF BEGINNING. **AND ALSO EXCEPT** That part of the SE $\frac{1}{4}$ SW $\frac{1}{4}$ described as follows: COMMENCING at the South quarter corner of Section 12; said point lies South 89°26'17" East 2633.17 feet from the Southwest corner of Section 12; THENCE North 00°22'39" East 418.55 feet along the East boundary of the SW $\frac{1}{4}$ of Section 12 to a point on the Southwesterly right of way of U.S. Highway 30, Project No. N.R.H. 23-0; THENCE along a curve right on said right of way: Δ -08°07'39"; R -1960.00 feet; Δ -278.03 feet; C -277.80 feet; T -139.25 feet; LCB -North 44°26'19" West to the POINT OF BEGINNING; THENCE North 89°26'17" West 712.26 feet; THENCE North 01°50'22" East 634.48 feet; THENCE South 89°54'12" East 315.19 feet to the Southwesterly right of way on said Highway; THENCE South 25°07'46" East 224.55 feet along said right of way; THENCE along a curve left on said right of way: Δ -15°14'43"; R -1960.00 feet; Δ -521.51 feet; C -519.98 feet; T -262.31 feet LCB -South 32°45'08" East to the REAL POINT OF BEGINNING. **ALSO:** Township 11 South,

Range 19 East, Boise Meridian, Twin Falls County, Idaho Section 12: Part of the SW $\frac{1}{4}$ more particularly described as follows: BEGINNING at the South quarter corner, said corner marked by a 5/8 rebar; THENCE North 00°08'49" West for a distance of 418.55 feet to the south right of way of State Highway 30; THENCE along said right of way along a non-tangent curve to the right for a distance of 799.70 feet to a $\frac{1}{2}$ " rebar, said curve having a radius of 1960.00 feet and a central angle of 23°22'38" and a long chord bearing of North 37°19'37" West for a distance of 794.16 feet; THENCE North 25°38'18" West (North 25°07'46" West rec.) along said right of way for a distance of 224.55 feet;

THENCE South 89°34'08" West (North 89°54'12" West rec.) for a distance of 411.19 feet to the POINT OF BEGINNING; THENCE South 00°03'11" West (South 00°33'43" West rec.) for a distance of 169.30 feet; THENCE South 89°57'45" East (South 89°26'17" East rec.) for a distance of 28.97 feet; THENCE South 00°01'32" West (South 00°33'43" West rec.) for a distance of 21.27 feet; THENCE South 89°34'48" West for a distance of 117.12 feet to a $\frac{1}{2}$ " rebar; THENCE South 89°34'48" West for a distance of 621.88 feet to a $\frac{1}{2}$ " rebar; THENCE North 00°30'18" West for a distance of 173.95 feet to a $\frac{1}{2}$ " rebar; THENCE North 89°34'48" East for a distance of 621.88 feet to a $\frac{1}{2}$ " rebar; THENCE North 78°58'34" East for a distance of 91.54 feet to the POINT OF BEGINNING.

INCLUDING a 5.00-foot-wide irrigation easement parallel with, adjoining, and West of the entire West boundary of the above-described parcel. **SUBJECT TO:** A 5.00-foot-wide irrigation easement parallel with, adjoining and East of the entire West boundary of the above described parcel. **AND ALSO:** Township 11 South, Range 19 East, Boise Meridian, Twin Falls County, Idaho Section 12: Part of the SW $\frac{1}{4}$, more particularly described as follows:

BEGINNING at the South quarter corner of said Section 12, said corner marked by a 5/8" rebar; THENCE North 00°08'49" West for a distance of 418.55 feet to the South right of way of State Highway 30; THENCE along said right of way, along a non-tangent curve to the right for a distance of 799.70 feet to a $\frac{1}{2}$ " rebar, said curve having a radius of 1960.00 feet and a central angle of 23°22'38" and a long chord bearing of North 37°19'37" West for a distance of 794.16 feet; THENCE North 25°38'18" West (N.25°07'46" W. rec.) along said right of way for a distance of 224.55 feet; THENCE South 89°34'08" West (N.89°54'12" W. rec.) for a distance of 411.19 feet to a point; THENCE South 00°03'11" West (S.00°33'43" W. rec.) for a distance of 169.30 feet; THENCE South 89°57'45" East (S.89°26'17" E. rec.) for a distance of 28.97 feet; THENCE South 00°01'32" West (S.00°33'43" W. rec.) for a distance of 21.27 feet; THENCE South 89°34'48" West for a distance of 117.12 feet to a $\frac{1}{2}$ " rebar, being the POINT OF BEGINNING; THENCE South 00° West for a distance of 174 feet; THENCE South 90° West for a distance of 622 feet, more or less; THENCE North 174 feet, more or less, to an existing $\frac{1}{2}$ " rebar; THENCE East 622 feet,

more or less, to the POINT OF BEGINNING.

TOGETHER WITH AND SUBJECT TO an easement lying within Section 12, Township 11 South, Range 19 East, Boise Meridian, Twin Falls County, Idaho, being more particularly described as follows:

BEGINNING at the South quarter corner of said Section 12, said corner marked by a 5/8" rebar; THENCE North 00°08'49" West for a distance of 418.55 feet to the South right of way of State Highway 30; THENCE along said right of way, along a non-tangent curve to the right for a distance of 799.70 feet to a $\frac{1}{2}$ " rebar, said curve having a radius of 1960.00 feet and a central angle of 23°22'38" and a long chord bearing of North 37°19'37" West for a distance of 794.16 feet; THENCE North 25°38'18" West (N.25°07'46" W. rec.) along said right of way for a distance of 224.55 feet; THENCE South 89°34'08" West (N.89°54'12" W. rec.) for a distance of 411.19 feet to the POINT OF BEGINNING; THENCE South 00°03'11" West (S.00°33'43" W. rec.) for a distance of 169.30 feet; THENCE South 89°57'45" East (S.89°26'17" E. rec.) for a distance of 28.97 feet; THENCE South 00°01'32" West (S.00°33'43" W. rec.) for a distance of 21.27 feet; THENCE South 89°34'48" West for a distance of 117.12 feet to a $\frac{1}{2}$ " rebar; THENCE North 00°30'18" West for a distance of 173.95 feet to a $\frac{1}{2}$ " rebar; THENCE North 78°58'34" East for a distance of 91.54 feet to the POINT OF BEGINNING.

TOGETHER WITH AND SUBJECT TO an easement

described as: Township 11 South, Range 19 East, Boise Meridian, Twin Falls County, Idaho Section 12: A part of the SW $\frac{1}{4}$ more particularly described as follows: BEGINNING at the South quarter corner of Section 12, said corner marked by a 5/8" rebar; THENCE North 00°08'49" West for a distance of 418.55 feet to the South right of way of State Highway 30; THENCE along said right of way along a non-tangent curve to the right for a distance of 799.70 feet to a $\frac{1}{2}$ " rebar, said curve having a radius of 1960.00 feet and a central angle of 23°22'38" and a long chord bearing of North 37°19'37" West for a distance of 794.16 feet; THENCE North 25°38'18" West (N.25°07'46" W. rec.) along said right of way for a distance of 185.87 feet to the POINT OF BEGINNING; THENCE South 89°34'08" West for a distance of 427.96 feet; THENCE North 00°03'11" East (N.00°33'43" E. rec.) for a distance of 35.00 feet; THENCE North 89°34'08" East (S.89°54'12" E. rec.) for a distance of 411.19 feet to the South right of way of State Highway 30; THENCE South 25°38'18" East (S.25°07'46" E. rec.) along said right of way for a distance of 38.68 feet to the POINT OF BEGINNING.

PARCEL NO. 10-7 Township 11 South, Range 19 East, Boise Meridian, Twin Falls County, Idaho

Section 12: A parcel of land described as follows: BEGINNING at a point 560 feet North of the South quarter corner of said Section at the intersection of the East line of the SW $\frac{1}{4}$ of said Section with

— Continued on next page

Public notices

the North line of the right of way of U.S. Highway 30; THENCE North along the quarter section line of said Section a distance of 2,740 feet to the Northeast corner of the S $\frac{1}{2}$ SE $\frac{1}{4}$ NW $\frac{1}{4}$ of said Section 12; THENCE West 1,320 feet to the Northwest corner of said S $\frac{1}{2}$ SE $\frac{1}{4}$ NW $\frac{1}{4}$ of said Section 12; THENCE South 234 feet to the intersection of the West line of the said S $\frac{1}{2}$ SE $\frac{1}{4}$ NW $\frac{1}{4}$ of said Section 12 with the Easterly right-of-way line of U.S. Highway 30; THENCE South 25°24' East along the Easterly right-of-way line of U.S. Highway 30 a distance of 2,200 feet; THENCE on a 3°05' curve to the left along said right-of-way line 650 feet to the PLACE OF BEGINNING. Township 11 South, Range 19 East, Boise Meridian, Twin Falls County, Idaho

Section 12: All that portion of the NW $\frac{1}{4}$ SE $\frac{1}{4}$ lying West of the Main Canal of the Twin Falls Canal Company. Township 11 South, Range 19 East, Boise Meridian, Twin Falls County, Idaho Section 12: N $\frac{1}{2}$ SW $\frac{1}{4}$ SE $\frac{1}{4}$ Township 11 South, Range 19 East, Boise Meridian, Twin Falls County, Idaho Section 12: That part of the SW $\frac{1}{4}$ SE $\frac{1}{4}$ lying West of U.S. Highway No. 30 Township 11 South, Range 19 East, Boise Meridian, Twin Falls County, Idaho Section 12: All that part of the SE $\frac{1}{4}$ SE $\frac{1}{4}$ more particularly described as follows: BEGINNING at the Southwest corner of the SE $\frac{1}{4}$ SE $\frac{1}{4}$ of said Section 12; THENCE North along the West boundary line of said SE $\frac{1}{4}$ SE $\frac{1}{4}$ a distance of 400 feet, more or less, to the Southwesterly right-of-way line of the Main Canal of the Twin Falls Canal Company; THENCE in a Southeasterly direction along said right of way a distance of 500 feet, more or less, to the South boundary line of said SE $\frac{1}{4}$ SE $\frac{1}{4}$; THENCE West along said South boundary line of said SE $\frac{1}{4}$ SE $\frac{1}{4}$ a distance of 450 feet, more or less, to the PLACE OF BEGINNING. EXCEPT Township 11 South, Range 19 East, Boise Meridian, Twin Falls County, Idaho Section 12: A parcel of land being on the North side of the centerline of Project No. ST-2846(618), Highway Survey, as shown on the plans thereof now on file in the office of the Idaho Transportation Department, Division of Highways, and being a portion of the SE $\frac{1}{4}$ SE $\frac{1}{4}$ of said Section 12 described as follows, to-wit: COMMENCING at the South quarter corner of said Section 12; THENCE South 89°50'16" East along the South boundary of the SE $\frac{1}{4}$ of Section 12 for a distance of 1413.13 feet, Station 1060+50.00, 9.78 feet left of said Project centerline and being the TRUE POINT OF BEGINNING; THENCE North 00°16'14" West for a distance of 40.22 feet, Station 1060+50.00, 50.00 feet left of said Project centerline; THENCE North 89°43'46" East parallel with said Project centerline for a distance of 350.00 feet, Station 1064+00.00, 50.00 feet left of said Project centerline; THENCE North 00°16'14" West for a distance of 20.00 feet, Station 1064+00.00, 70.00 feet left of said Project centerline; THENCE North 89°43'46" East parallel with said Project centerline for a distance of 50.00 feet, Station 1064+50.00, 70.00 feet left of said Project centerline; THENCE South 00°16'14" East for a distance of 30.00 feet, Station 1064+50.00,

40.00 feet left of said Project centerline; THENCE North 89°43'46" East parallel with said Project centerline of a distance of 38.74 feet to a point on the centerline of the Twin Falls Main Canal, Station 1064+88.74, 40.00 feet left of said Project centerline; THENCE South 25°52'53" East along said canal centerline for a distance of 9.23 feet, Station 1064+92.73, 31.68 feet left of said Project centerline; THENCE South 15°16'35" East along said canal centerline for a distance of 26.19 feet to a point on the South boundary of the SE $\frac{1}{4}$ of said Section 12, Station 1064+99.51, 6.39 feet left of said Project centerline; THENCE North 89°50'16" West along the South boundary of the SE $\frac{1}{4}$ of Section 12 for a distance of 449.52 feet to the POINT OF BEGINNING. Highway Reference Station: 1060+50.00 to 1064+99.51 Township 11 South, Range 19 East, Boise Meridian, Twin Falls County, Idaho Section 12: All that part of the S $\frac{1}{2}$ SW $\frac{1}{4}$ SE $\frac{1}{4}$ lying West of the Main Canal of the Twin Falls Canal Company. SUBJECT TO an easement reserved for Uhlig Ranches, Inc., an Idaho corporation, for the maintenance and use of that certain drain ditch running along the West side of the canal bordering said premises. Said easement shall be perpetual. SUBJECT TO Highway District right of way.

PARCEL NO. 10-8 Township 11 South, Range 19 East, Boise Meridian, Twin Falls County, Idaho

Section 12: A part of the SE $\frac{1}{4}$ SW $\frac{1}{4}$ described as follows: COMMENCING at the South quarter corner of Section 12; said point lies South 89°26'17" East 2633.17 feet from the Southwest corner of Section 12; THENCE North 00°22'39" East 418.55 feet along the East boundary of SW $\frac{1}{4}$ of Section 12 to a point on the Southwesterly right of way on U.S. Highway 30, Project No. N.R.H. 23-0; THENCE along a curve right on said right of way: Δ -08°07'39"; R -1960.00 feet; A -278.03 feet; C -277.80 feet; T -139.25 feet; LCB -North 44°26'19" West to the REAL POINT OF BEGINNING; THENCE North 89°26'17" West 712.26 feet; THENCE North 01°50'22" East 634.48 feet; THENCE South 89°54'12" East 315.19 feet to the Southwesterly right of way on said Highway; THENCE South 25°07'46" East 224.55 feet along the said right of way; THENCE along a curve left on said right of way: Δ -15°14'43"; R -1960.00 feet; A -521.51 feet; C -519.98 feet; T -262.31 feet LCB -South 32°45'08" East to the REAL POINT OF BEGINNING. INCLUDING a 5.00-foot-wide irrigation easement parallel with, adjoining, and West of the entire West boundary of the above-described parcel. SUBJECT TO a 5.00-foot-wide irrigation easement parallel with, adjoining, and East of the entire West boundary of the above-described parcel. AND SUBJECT TO Highway District right of way.

S

PARCEL NO. 2 Township 11 South, Range 19 East, Boise Meridian, Twin Falls County, Idaho, Section 5: Lot 2; SW $\frac{1}{4}$ NE $\frac{1}{4}$; NW $\frac{1}{4}$ SE $\frac{1}{4}$ SUBJECT TO Highway District right of way.

PARCEL NO. 3 Township 10 South, Range 19 East, Boise

Meridian, Twin Falls County, Idaho Section 32: S $\frac{1}{2}$ SE $\frac{1}{4}$; SE $\frac{1}{4}$ SW $\frac{1}{4}$ SUBJECT TO Highway District right of way. Township 11 South, Range 19 East, Boise Meridian, Twin Falls County, Idaho Section 4: S $\frac{1}{2}$ EXCEPT BEGINNING at a point which is North 1320 feet, more or less, and West 25 feet more or less, from the Southeast corner of said Section 4 and which is the TRUE POINT OF BEGINNING; THENCE West 150 feet; THENCE South 150 feet; THENCE East 150 feet; THENCE North 150 feet. AND EXCEPT A tract of land in the E $\frac{1}{2}$ SE $\frac{1}{4}$ of Section 4, Township 11 South, Range 19 E., B.M., Twin Falls County, Idaho, more particularly described as follows BEGINNING at a point which is North 1320 feet, more or less, and West 25 feet more or less from the Southeast corner of Section 4, which is the TRUE POINT OF BEGINNING; THENCE West 200 feet; THENCE North 200 feet; THENCE East 200 feet; THENCE South 200 feet to the TRUE POINT OF BEGINNING. Section 5: W $\frac{1}{2}$; E $\frac{1}{2}$ E $\frac{1}{2}$; SW $\frac{1}{4}$ SE $\frac{1}{4}$; Section 9: NW $\frac{1}{4}$ NE $\frac{1}{4}$; S $\frac{1}{2}$ NE $\frac{1}{4}$; S $\frac{1}{2}$ NW $\frac{1}{4}$; NE $\frac{1}{4}$ NE $\frac{1}{4}$; N $\frac{1}{2}$ NW $\frac{1}{4}$ SUBJECT TO Highway District right of way.

PARCEL NO. 13: Township 10 South, Range 19 East, Boise Meridian, Twin Falls County, Idaho

A tract of land located in Section 31 and the SE $\frac{1}{4}$ of Section 30 more particularly described as follows: BEGINNING at the Southeast corner of said Section 30; THENCE North 00°07'12" West, 2514.82 feet along the easterly boundary of said Section 30 to the center of the Twin Falls Canal Company Lowline Canal; THENCE southwesterly along the center of said Lowline Canal the following courses and distances: South 89°50'15" West 737.93 feet; THENCE South 82°33'45" West 91.54 feet; THENCE South 61°26'44" West 174.52 feet; THENCE South 32°33'54" West 182.96 feet; THENCE South 13°51'56" West 171.19 feet; THENCE South 10°28'29" East 153.40 feet; THENCE South 14°55'00" East 176.57 feet; THENCE South 4°13'56" East 185.91 feet; THENCE South 8°30'19" West 144.80 feet; THENCE South 17°11'43" West 120.80 feet; THENCE South 25°24'21" West 261.98 feet; THENCE South 35°41'20" West 273.84 feet; THENCE South 31°36'44" West 952.15 feet; THENCE South 32°48'48" West 66.80 feet to the southerly boundary of said Section 30; THENCE continuing along the center of said Lowline Canal South 32°48'48" West 114.62 feet; THENCE South 41°06'54" West 135.49 feet; THENCE South 55°30'16" West 82.02 feet; THENCE South 65°47'27" West 263.66 feet; THENCE South 50°45'29" West 159.85 feet; THENCE South 24°37'54" West 173.36 feet; THENCE South 8°31'27" West 202.07 feet; THENCE South 9°41'31" West 352.94 feet; THENCE South 32°19'34" West 116.51 feet; THENCE South 56°47'44" West 219.01 feet; THENCE South 84°10'28" West 191.87 feet; THENCE North 73°52'37" West 275.02 feet; THENCE North 85°11'28" West 182.70 feet; THENCE South 72°51'03" West 180.27 feet; THENCE leaving the center of said Lowline Canal South 21°33'17"

East 423.85 feet along a concrete irrigation ditch; THENCE South 53°42'51" East 811.55 feet along said irrigation ditch; THENCE South 27°35'18" East 44.53 feet along said irrigation ditch; THENCE South 00°02'56" East 408.03 feet along said irrigation ditch to the center of a field road; THENCE South 89°59'07" East 1934.14 feet along the center of said field road; THENCE South 39°03'29" East 191.50 feet; THENCE South 48°50'57" East 226.98 feet; THENCE South 89°41'08" East 269.19 feet; THENCE South 81°34'05" East 166.86 feet; THENCE North 88°28'02" East 219.43 feet to a point on the easterly boundary of said Section 31; THENCE North 00°07'12" West 2992.85 feet along the easterly boundary of said Section 31 to the POINT OF BEGINNING. SUBJECT TO the rights of public road which affects 25.00 feet on each side of the section lines of said Sections 30 and 31.

PARCEL NO. 1 Township 10 South, Range 19 East, Boise Meridian, Twin Falls County, Idaho Section 25: SE $\frac{1}{4}$ SW $\frac{1}{4}$ and all of Government Lot 7 EXCEPT: A strip and tract of land 66 feet in width bounded as follows: BEGINNING at a point on the North line of the SW $\frac{1}{4}$ SE $\frac{1}{4}$ of Section 25, Township 10 South, Range 19 East, Boise Meridian, which point is approximately 3,538 feet East and 3,955 feet South of the Section corner common to Sections 23, 24, 25, and 26 in said Township and Range, and running THENCE on a line whose bearing is South 03°27' East for a distance of 528 feet, more or less, to the beginning of a 4° curve to the left; THENCE along said 4° curve for a distance of 542 feet, more or less, to the end of said curve; THENCE on a line whose bearing is South 26°37' East to a point 25 feet North of the South line of the SW $\frac{1}{4}$ SE $\frac{1}{4}$ of said Section 25; THENCE West for a distance of 70 feet, more or less; THENCE on a line whose bearing is North 26°37' West for a distance of 222 feet, more or less, to the beginning of a 4° curve to the right; THENCE on said 4° curve to the right for a distance of 570 feet, more or less, to the end of said curve; THENCE on a line whose bearing is North 03°57' West for a distance of 532 feet to the North line of the SW $\frac{1}{4}$ SE $\frac{1}{4}$ of said Section 25; THENCE East on said North line a distance of 68 feet, more or less, to the POINT OF BEGINNING.

AND EXCEPT: Township 10 South, Range 19 East, Boise Meridian, Twin Falls County, Idaho Section 25: A parcel of land located in Government Lot 7 described as follows: BEGINNING at the South quarter corner of Section 25; THENCE North 89°52'26" East 731.7 feet along the Southerly boundary of said Section 25 to the TRUE POINT OF BEGINNING; THENCE North 89°52'26" East 405.00 feet along said Southerly boundary of Section 25 to a point in the centerline of a certain roadway known as "Old U.S. 30;" THENCE North 27°48'34" West 135.51 feet along said centerline; THENCE South 89°52'26" West 342.04 feet; THENCE South 00°07'34" East 120.00 feet to the TRUE POINT OF BEGINNING.

AND ALSO EXCEPT: Township 10 South, Range 19 East, Boise Meridian, Twin Falls

County, Idaho Section 25: A parcel of land in Lot 7 more particularly described as follows: COMMENCING at the South quarter corner of said Section 25; THENCE Easterly along the Southerly boundary of said Section 25 North 89°52'26" East 731.70 feet; THENCE North 00°07'34" West 120.00 feet to the TRUE POINT OF BEGINNING; THENCE North 00°07'34" West 143.00 feet; THENCE Easterly parallel with Southerly boundary of said Section 25 North 89°52'26" East 267.05 feet to the center of Old Highway No. 30; THENCE Southerly along the center of said Old Highway No. 30, 9.90 feet on the arc of a 4°00' curve to the left with a central angle of 00°23'46", a radius of 1432.5 feet, and a chord which bears South 27°36'41" East 9.90 feet to a point of tangency of said highway; THENCE continuing Southeasterly along the center of said highway South 27°48'34" East 151.59 feet; THENCE Westerly parallel with the Southerly boundary of said Section 25 South 89°52'26" West 342.04 feet to the TRUE POINT OF BEGINNING.

AND FURTHER EXCEPT: Township 10 South, Range 19 East, Boise Meridian, Twin Falls County, Idaho Section 25: A parcel of land located in the SE $\frac{1}{4}$ SW $\frac{1}{4}$ more particularly described as follows: BEGINNING at the Southwest corner of said Section 25; THENCE North 89°58'42" East a distance of 1320.78 feet along the Southerly boundary of said Section 25 to the Southwest corner of said SE $\frac{1}{4}$ SW $\frac{1}{4}$ and the TRUE POINT OF BEGINNING; THENCE North 0°01'00" West a distance of 349.14 feet along the Westerly boundary of said SE $\frac{1}{4}$ SW $\frac{1}{4}$; THENCE North 87°19'06" East a distance of 228.44 feet; THENCE South 0°14'43" West a distance of 212.54 feet; THENCE South 89°46'27" East a distance of 61.86 feet; THENCE South 02°03'37" East a distance of 147.03 feet to a point on the Southerly boundary of said SE $\frac{1}{4}$ SW $\frac{1}{4}$; THENCE South 89°58'42" West a distance of 294.32 feet along the Southerly boundary of said SE $\frac{1}{4}$ SW $\frac{1}{4}$ to the TRUE POINT OF BEGINNING. SUBJECT TO the rights of public roads which affect the Southerly 25 feet and the Westerly 40.00 feet thereof.

PARCEL NO. 2 Township 10 South, Range 19 East, Boise Meridian, Twin Falls County, Idaho

Section 25: SE $\frac{1}{4}$ NW $\frac{1}{4}$; and the North 15 acres of the NE $\frac{1}{4}$ SW $\frac{1}{4}$ more particularly described as follows: BEGINNING at a point 1,320 feet East of the quarter corner of the West line of said Section 25, which point is in the center of the county road and referenced 25 feet East by a 5-inch stone marked with a cross; THENCE East a distance of 1,320 feet to the center of said Section 25, which point is also marked with a 5-inch stone marked with a cross; THENCE South a distance of 495 feet to a point in a large pile of rocks which point is marked by a fence post; THENCE 1,320 feet West to a point in the center of the above-mentioned road which point is referenced 25 feet East by an iron pipe in the top of a stump; THENCE North along the center of said road a distance of 495 feet to the POINT OF BEGINNING.

— Continued on next page

Public notices

Y Township 10 South, Range 19 East, Boise Meridian, Twin Falls County, Idaho Section 36: SW $\frac{1}{4}$ NE $\frac{1}{4}$ SUBJECT TO Highway District right of way **EXCEPT** right of way of Union Pacific Railroad Section 36: NW $\frac{1}{4}$ SE $\frac{1}{4}$ SUBJECT TO Highway District right of way. **EXCEPT** that part lying West of the main canal of the Twin Falls Canal Company **AND EXCEPT** right of way of Union Pacific Railroad **AND ALSO EXCEPT** that part lying between the right of way of the Union Pacific Railroad and the main canal of the Twin Falls Canal Company. **EXCEPT:** Township 10 South, Range 19 East, Boise Meridian, Twin Falls County, Idaho Section 36: A parcel of land located in the SW $\frac{1}{4}$ NE $\frac{1}{4}$ and the NW $\frac{1}{4}$ SE $\frac{1}{4}$ more particularly described as follows: BEGINNING at the Southeast corner of said Section 36; THENCE North 0°17'12" East a distance of 2,641.40 feet along the Easterly boundary of said Section 36 to the Northeast corner of the SE $\frac{1}{4}$ of said Section 36; THENCE South 89°40'33" West a distance of 1,329.26 feet along the Northerly boundary of said SE $\frac{1}{4}$ to the Northeast corner of said NW $\frac{1}{4}$ SE $\frac{1}{4}$ and the TRUE POINT OF BEGINNING; THENCE South 0°07'38" West a distance of 42.00 feet along the Easterly boundary of said NW $\frac{1}{4}$ SE $\frac{1}{4}$; THENCE South 86°21'24" West a distance of 174.23 feet; THENCE North 0°13'11" West a distance of 630.32 feet; THENCE North 89°40'33" East a distance of 174.18 feet to a point on the Easterly boundary of said SW $\frac{1}{4}$ NE $\frac{1}{4}$; THENCE South 0°13'11" East a distance of 578.23 feet along the Easterly boundary of said SW $\frac{1}{4}$ NE $\frac{1}{4}$ to the TRUE POINT OF BEGINNING. SUBJECT TO the rights of a public road which affects the Easterly 25.00 feet thereof.

AA Township 11 South, Range 19 East, Boise Meridian, Twin Falls County, Idaho Section 28: Part of the SE $\frac{1}{4}$ SE $\frac{1}{4}$, more particularly described as follows: BEGINNING at the Southeast section corner of Section 28, said corner marked by a ½-inch rebar which shall be the POINT OF BEGINNING; THENCE North 89°43'06" West along the South line of the SE $\frac{1}{4}$ SE $\frac{1}{4}$ for a distance of 241.95 feet; THENCE North 00°03'57" East for a distance of 23.40 feet to a ½-inch rebar; THENCE North 00°03'57" East for a distance of 393.49 feet to a ½-inch rebar; THENCE South 89°43'06" East for a distance of 223.68 feet to a ½-inch rebar; THENCE South 89°43'06" East for a distance of 18.27 feet to the East line of the SE $\frac{1}{4}$ SE $\frac{1}{4}$; THENCE South 00°03'57" West along said line for a distance of 416.89 feet to the POINT OF BEGINNING.

BB **PARCEL NO. 1** Township 10 South, Range 19 East, Boise Meridian, Twin Falls County, Idaho Section 32: NE $\frac{1}{4}$, NE $\frac{1}{4}$ SE $\frac{1}{4}$, NW $\frac{1}{4}$ SE $\frac{1}{4}$, E $\frac{1}{2}$ NW $\frac{1}{4}$, and NE $\frac{1}{4}$ SW $\frac{1}{4}$

PARCEL NO. 2 Right-of-way easement over and across and upon a strip of land 50 feet in width for the first 50 feet of said easement and 10 feet in width thereafter, centered on the following described line, to-wit: COMMENCING at the Northwest corner of Section 29,

Township 10 South, Range 19 East, Boise Meridian, Twin Falls County, Idaho; said point lies North 00°06'59" West 5281.28 feet from the Southwest corner of Section 29; THENCE South 52°44'36" East 3091.69 feet to the REAL POINT OF BEGINNING of the centerline of said easement; THENCE South 17°47'24" East 549.08 feet; THENCE South 00°04'47" West 1851.79 feet; THENCE South 33°54'39" East 1274.74 feet to the REAL ENDING POINT of the centerline of said 10-foot-wide easement; AS CREATED BY Right-of-Way Easement from Gene C. Walker and Eldora Ann Walker, husband and wife, Grantors, conveying an undivided \square interest to Helen Nordling; an undivided \square interest to Esther I. Frahm, Life Tenant, Arlene M. Strango, Ann L. McLaughlin, and James A. Frahm, Remaindermen; and an undivided \square interest to the Estate of Mabel A. Davis, Grantees, recorded February 9, 1987, as Instrument No. 916894, records of Twin Falls County, Idaho; and re-recorded July 20, 1987, as Instrument No. 925159, records of Twin Falls County, Idaho.

PARCEL NO. 3 Irrigation easement as defined in Easement dated August 25, 1993, given by Gene C. Walker and Eldora Ann Walker, husband and wife, recorded August 25, 1993, as Instrument No. 1993-012362, records of Twin Falls County, Idaho.

DD Township 11 South, Range 19 East, Boise Meridian, Twin Falls County, Idaho Section 12: Part of the SW $\frac{1}{4}$ more particularly described as follows: BEGINNING at the South quarter corner, said corner marked by a 5/8-inch rebar THENCE North 00°08'49" West for a distance of 418.55 feet to the South right of way of State Highway 30; THENCE along said right of way along a non-tangent curve to the right for a distance of 799.70 feet to a ½-inch rebar, said curve having a radius of 1960.00 feet and a central angle of 23°22'38" and a long chord bearing of North 37°19'37" West for a distance of 794.16 feet; THENCE North 25°38'18" West along said right of way for a distance of 185.87 feet to the POINT OF BEGINNING; THENCE South 89°34'08" West for a distance of 427.96 feet; THENCE South 00°03'11" West for a distance of 134.30 feet; THENCE South 89°57'45" East for a distance of 28.97 feet; THENCE South 00°01'32" West for a distance of 21.27 feet; THENCE South 00°01'32" West for a distance of 123.88 feet; THENCE South 89°57'45" East for a distance of 539.81 feet; THENCE along said right of way of State Highway 30 for a distance of 130.26 feet to a ½-inch rebar, said curve having a radius of 1960.00 feet and a delta angle of 03°48'28" and a long chord bearing of North 27°32'32" West for a distance of 130.23 feet; THENCE North 25°38'18" West for a distance of 32.97 feet; THENCE North 25°38'18" West for a distance of 152.90 feet to the POINT OF BEGINNING.

EE Township 11 South, Range 19 East, Boise Meridian, Twin Falls County, Idaho Section 12: That part of the SW $\frac{1}{4}$ lying South and West of the right of way of U.S. Highway 30 in said Section, more particularly described as follows: COMMENCING at the Southeast section corner of

Section 12; THENCE North 68°25'55" West 3,433.92 feet; THENCE South 89°42'15" West 11.04 feet to the REAL POINT OF BEGINNING; THENCE continuing South 89°42'15" West 349.96 feet; THENCE North 00°08'53" East 74.99 feet; THENCE North 89°51'15" East 25.00 feet; THENCE North 00°58'55" East 180.00 feet; THENCE North 87°41'50" East 198.01 feet; THENCE South 25°22'03" East 289.04 feet to the REAL POINT OF BEGINNING.

FF Township 11 South, Range 19 East, Boise Meridian, Twin Falls County, Idaho Section 12: That part of the SW $\frac{1}{4}$ more particularly described as follows: COMMENCING at the Southwest corner of Section 12; THENCE 466 feet East along the South boundary of the SW $\frac{1}{4}$ of Section 12 to the TRUE POINT OF BEGINNING; THENCE 466 feet East along the South boundary of the SW $\frac{1}{4}$ of Section 12; THENCE North parallel to the West boundary of the SW $\frac{1}{4}$ of Section 12, 466 feet; THENCE West 466 feet, more or less, parallel to the South boundary of the SW $\frac{1}{4}$ of Section 12; THENCE South parallel to the West boundary 466 feet to the POINT OF BEGINNING. **SUBJECT TO** a 25.00-foot-wide county roadway easement parallel with and adjoining the South boundary of the above described parcel. **EXCEPT:** Township 11 South, Range 19 East, Boise Meridian, Twin Falls County, Idaho Section 12: A part of the SW $\frac{1}{4}$ SW $\frac{1}{4}$ more particularly described as follows: COMMENCING at the Southwest corner of said Section; said point lies North 89°26'17" West 2,633.17 feet from the South quarter corner of Section 12; THENCE South 89°26'17" East 336.38 feet along the South boundary of Section 12 to the REAL POINT OF BEGINNING; THENCE North 00°33'43" East 466.00 feet; THENCE South 89°26'17" East 200.00 feet; THENCE South 00°33'43" West 466.00 feet to the South boundary of Section 12; THENCE North 89°26'17" West 200.00 feet to the REAL POINT OF BEGINNING.

GG Township 11 South, Range 19 East, Boise Meridian, Twin Falls County, Idaho Section 12: A part of the SW $\frac{1}{4}$ SW $\frac{1}{4}$ more particularly described as follows: COMMENCING at the Southwest corner of said Section; said point lies North 89°26'17" West 2,633.17 feet from the South quarter corner of Section 12; THENCE South 89°26'17" East 336.38 feet along the South boundary of Section 12 to the REAL POINT OF BEGINNING; THENCE North 00°33'43" East 466.00 feet; THENCE South 89°26'17" East 200.00 feet; THENCE South 00°33'43" West 466.00 feet to the South boundary of Section 12; THENCE North 89°26'17" West 200.00 feet to the REAL POINT OF BEGINNING. **SUBJECT TO** a 25.00-foot-wide county roadway easement parallel with and adjoining the South boundary of the above described parcel.

HH Township 11 South, Range 19 East, Boise Meridian, Twin Falls County, Idaho Section 36: That part of the NW $\frac{1}{4}$ NW $\frac{1}{4}$ more particularly described as follows: BEGINNING at the Northwest corner of Section 36

of Township 11 South, Range 19 East of the Boise Meridian, said corner marked by a 5/8-inch rebar which shall be the TRUE POINT OF BEGINNING; THENCE South 89°55'18" East along the Section line for 214.00 feet to a P.K. nail; THENCE South 0°12'35" West for 667.96 feet to a ½-inch rebar; THENCE North 89°02'37" West for 214.02 feet to a ½-inch rebar on Section line; THENCE North 0°12'35" East along the Section line for 664.68 feet to the TRUE POINT OF BEGINNING. **SUBJECT TO** a 25-foot-wide county road right of way along the North and West sides. **AND SUBJECT TO** an easement for an irrigation line along the West boundary of the above described parcel. **ALSO SUBJECT TO** an easement for an irrigation pump facility in the Northwest corner of the above described parcel.

Cassia County
PARCEL NO. Township 11 South, Range 21 East, Boise Meridian, Cassia County, Idaho Section 11: N $\frac{1}{2}$ **EXCEPTING THEREFROM** the following described parcel of land: BEGINNING at the Northeast corner of said Section 11; THENCE South 700 feet along the section line common to Sections 11 and 12, Township 11 South, Range 21 East, Boise Meridian; THENCE Northwesterly to a point on the section line common to Sections 11 and 2 that is 800 feet West of the Northeast corner of Section 11; THENCE East 800 feet to the POINT OF BEGINNING **ALSO EXCEPTING THEREFROM** that portion deeded to the State of Idaho for highway purposes.

PARCEL NO. 2 Township 11 South, Range 21 East, Boise Meridian, Cassia County, Idaho Section 11: Part of the NE $\frac{1}{4}$ NE $\frac{1}{4}$ more particularly described as follows: BEGINNING at the Northeast corner of said Section 11; THENCE South 700 feet along the section line common to Sections 11 and 12, Township 11 South, Range 21 East, Boise Meridian; THENCE Northwesterly to a point on the section line common to Sections 11 and 2 that is 800 feet West of the Northeast corner of Section 11; THENCE East 800 feet to the POINT OF BEGINNING. **EXCEPTING THEREFROM** that portion deeded to the State of Idaho for highway purposes.

PARCEL NO. 3 Township 11 South, Range 21 East, Boise Meridian, Cassia County, Idaho Section 2: All that part of the SE $\frac{1}{4}$ SE $\frac{1}{4}$ lying South of State Highway No. 30 (formerly U.S. Highway No. 30)

PARCEL NO. 4 Township 11 South, Range 21 East of the Boise Meridian, Cassia County, Idaho Section 8: SE $\frac{1}{4}$ Section 9: SW $\frac{1}{4}$

PARCEL NO. 5 Township 11 South, Range 21 East of the Boise Meridian, Cassia County, Idaho Section 10: SW $\frac{1}{4}$ Section 18: ALL Section 21: NE $\frac{1}{4}$

PARCEL NO. 6 Township 11 South, Range 21 East of the Boise Meridian, Cassia County, Idaho Section 7: That part of the SE $\frac{1}{4}$ that lies South of U.S. Highway 30 right of way Section 8: That part of the NE $\frac{1}{4}$ and the W $\frac{1}{2}$ that lies South of U.S. Highway 30 right of way Section 9: SE $\frac{1}{4}$; NE $\frac{1}{4}$; NW $\frac{1}{4}$ Section 15: W $\frac{1}{2}$ Section 16: E $\frac{1}{2}$

PARCEL NO. 7 Township 11 South, Range 21 East, Boise Meridian, Cassia County, Idaho Section 11: S $\frac{1}{2}$ **EXCEPTING**

THEREFROM the following described tracts:

Tract No. 1 BEGINNING at a point that is 1950 feet North of the Southwest corner of the SW $\frac{1}{4}$ of said Section 11; THENCE North 208 feet; THENCE East 208 feet; THENCE South 208 feet; THENCE West 208 feet to the POINT OF BEGINNING.

Tract No. 2 BEGINNING at a point that is 2158 feet North of the Southwest corner of the SW $\frac{1}{4}$ of said Section 11; THENCE East 208 feet to the TRUE POINT OF BEGINNING; THENCE North 53°42'13" East 815 feet to a point on the North boundary of the SW $\frac{1}{4}$; THENCE West along the said North boundary 800 feet, more or less, to the Northwest corner of the SW $\frac{1}{4}$; THENCE South along the Section line 482 feet, more or less, to a point that is 2158 feet North of the Southwest corner of the SW $\frac{1}{4}$; THENCE East 208 feet to the TRUE POINT OF BEGINNING.

PARCEL NO. 8 Township 11 South, Range 21 East, Boise Meridian, Cassia County, Idaho Section 10: NW $\frac{1}{4}$ SE $\frac{1}{4}$; and S $\frac{1}{2}$ SE $\frac{1}{4}$

PARCEL NO. 9 Township 11 South, Range 21 East, Boise Meridian, Cassia County, Idaho Section 10: NE $\frac{1}{4}$ SE $\frac{1}{4}$

PARCEL NO. 10 Township 11 South, Range 21 East, Boise Meridian, Cassia County, Idaho Section 11: Part of the NW $\frac{1}{4}$ SW $\frac{1}{4}$ more particularly described as follows: BEGINNING at a point that is 1950 feet North of the Southwest corner of the SW $\frac{1}{4}$ of said Section 11; THENCE North 208 feet; THENCE East 208 feet; THENCE South 208 feet; THENCE West 208 feet to the POINT OF BEGINNING. **AND BEGINNING** at a point that is 2158 feet North of the Southwest corner of the SW $\frac{1}{4}$ of said Section 11; THENCE North 208 feet; THENCE East 208 feet; THENCE South 208 feet; THENCE West 208 feet to the POINT OF BEGINNING. **AND BEGINNING** at a point that is 2158 feet North of the Southwest corner of the SW $\frac{1}{4}$ of said Section 11; THENCE East 208 feet to the TRUE POINT OF BEGINNING; THENCE North 53°42'13" East 815 feet to a point on the North boundary of the SW $\frac{1}{4}$; THENCE West along the said North boundary 800 feet, more or less, to the Northwest corner of the SW $\frac{1}{4}$; THENCE South along the Section line 482 feet, more or less, to a point that is 2158 feet North of the Southwest corner of the SW $\frac{1}{4}$; THENCE East 208 feet to the TRUE POINT OF BEGINNING.

Blaine County

PARCEL NO. 1 Township 2 South, Range 21 East of the Boise Meridian, Blaine County, Idaho Section 3: A parcel of land located in the SE $\frac{1}{4}$ NW $\frac{1}{4}$ more particularly described as follows:

COMMENCING at the North quarter corner of said Section 3; THENCE South 00°49'52" East along the East boundary of the NW $\frac{1}{4}$ of Section 3 for a distance of 1,450.00 feet; THENCE North 88°57'30" West for a distance of 37.81 feet to a point on the Westerly right-of-way boundary of Highway U.S. 93 and being the TRUE POINT OF BEGINNING; THENCE South 00°51'00" East along the Westerly right-of-way boundary of Highway U.S. 93 for a distance of 1,204.61 feet to a point on the Southerly boundary of the NW $\frac{1}{4}$ of Section 3; THENCE South 89°03'31" West along the Southerly boundary of the NW $\frac{1}{4}$ of Section 3 for a distance of 757.75 feet; THENCE North 01°03'00" West for a distance of 1,231.29 feet to a point on the Southerly boundary of Tax

— Continued on next page

Public notices

Lot 4035; THENCE South 88°57'30" East along the Southerly boundary of Tax Lot 4035 for a distance of 762.47 feet to the TRUE POINT OF BEGINNING. Also known as Tax Lot 7314. **SUBJECT TO** a 25.0-foot-wide road easement for the purpose of ingress and egress; said easement being adjacent to and on the Northerly side of the Southerly boundary of the described parcel. **AND EXCEPTING** the Highway right of way.

Owyhee County

PARCEL NO. 1 Township 9 South, Range 12 East, Boise Meridian, Owyhee County, Idaho Section 18: S½SE¼ Section 19: NE¼NE¼ Section 29: E½NE¼; SE¼NW¼; N½SE¼

PARCEL NO. 2 Township 9 South, Range 11 East, Boise Meridian, Owyhee County, Idaho Section 24: N½NE¼ Township 9 South, Range 12 East, Boise Meridian, Owyhee County, Idaho Section 18: Lots 3, 4; E½SW¼ Section 19: Lot 1; NE¼NW¼ Section 20: S½NW¼; SW¼ Section 29: N½NW¼

PARCEL NO. 3 Township 9 South, Range 12 East, Boise Meridian, Owyhee County, Idaho Section 17: SW¼SE¼ Section 20: E½NE¼; NE¼SE¼ Section 21: SE¼NW¼; W½SW¼; NE¼SW¼

PARCEL NO. 4 Township 9 South, Range 12 East, Boise Meridian, Owyhee County, Idaho Section 19: NW¼NE¼; S½NE¼; SE¼NW¼; NE¼SW¼; N½SE¼; SE¼SE¼

PARCEL NO. 5 Township 9 South, Range 12 East, Boise Meridian, Owyhee County, Idaho Section 19: Lot 2; SW¼SE¼ Section 20: W½E½ Section 29: W½NE¼

PARCEL NO. 6 Township 9 South, Range 12 East, Boise Meridian, Owyhee County, Idaho Section 28: W½

PARCEL NO. 7 Township 9 South, Range 12 East, Boise Meridian, Owyhee County, Idaho Section 29: SW¼SW¼ Section 30: SE¼SE¼ Section 31: E½NE¼ Section 32: NW¼

EXHIBIT B

All furnishings, fixtures (including trade fixtures), appliances, furniture, pumps, motors, sprinkler systems and mainlines, and all other equipment used for the production of water on the land described in attached Exhibit A (the "Property"), or for the irrigation or drainage thereof, and all potato storage equipment, together with, whether now owned or hereafter acquired, any and all accessions, parts, additions, replacements and substitutions for any of such property, and all proceeds (including insurance proceeds) from the sale or other disposition of any such property, including but not limited to:

EQUIPMENT LIST
TRACT I 1 GE 400hp ELECTRIC MOTOR SERIAL #FY243055; 1 WINROATH DEEP WELL TURBINE PUMP SERIAL #9878; 3 7-TOWER VALLEY CENTER PIVOTS; 1 MARATHON ELECTRIC 40hp MOTOR SERIAL #A1059V-55; 1 CENTRIFUGAL BOOSTER PUMP no serial number; 320 JOINTS 3"X40' ALUMINUM HANDLINES; VARIOUS VALVES CONNECTORS AND END PLUGS TRACT II 1 ZIMMATIC 12-TOWER PIVOT SERIAL #P-19842; 1 BALDOR 100hp CENTRIFUGAL PUMP, MOTOR AND PANEL SERIAL #294c; 1 125 hp BOOSTER PUMP, MOTOR AND PANEL SERIAL #YA40575TDS026GNW frame SERIAL #40576; 1 CORNELL 40hp BOOSTER PUMP, MOTOR AND PANEL SERIAL #10378312.6; 150 JOINTS OF 3" HOOK AND LATCH HANDLINES

All rents, issues, profits, royalties and income arising out of or related to real property in Twin Falls and Cassia Counties, Idaho, whether now or hereafter due, described on Exhibit "A".

All equipment and fixtures (including trade fixtures), including without limitation all fixed potato equipment and all irrigation equipment (all pumps, motors, sprinkler systems, mainlines and all other irrigation equipment used for the production of water on the land described in the attached Exhibit "A" (the "Property") or for the irrigation or drainage thereof, whether now owned or hereafter acquired, and whether now existing or hereafter arising, and all accessions, parts, additions, replacement and substitutions for any of such property, and all proceeds (including insurance proceeds) from the sale or other disposition of any of such property.

All rents, issues, profits, royalties and income arising out of or related to real property in Twin Falls, Cassia, Blaine and Owyhee Counties, Idaho, whether now or hereafter due, described on Exhibit "A." Irrigation Equipment Cummins Farms, Inc.

TRACT 1 - North Farm
The Home Place: US Electric Motor 25 HP; Serial #341897: Aurora Vertiline Pump; Serial #98-74407

:US Electric Motor 40 HP; Serial #1148918: Aurora Vertiline Pump; no serial number: GE Motor 60 HP; Serial #CHJ315407: Layne Bowler Pump; Serial #44982: Westinghouse Electric 30 HP; Serial #8072281: Pomara Pump; Serial #H7733: GE Motor 50 HP; Serial #KH2435410: Peerless Centrifugal Pump; no serial number: 4 ¾-1/4 mile Center Driven Wheelines

Hawker-Canyon: Baldor Electric Motor 25 HP; Serial #39K061W689: Centrifugal Pump; serial number and make unknown: Baldor Electric Motor 25 HP; Serial #39K061W699: Centrifugal Pump, serial number and make unknown: Baldor Electric Motor 25 HP; Serial #39K061W639: Centrifugal Pump, serial number and make unknown: 8-1/4 mile Center Drive Wheelines of various makes

Moore: GE Motor 300 HP; Serial #EDJ515145: Layne Bowler Pump - no serial number: GE Motor 500 HP; Serial #MJJ1219020: Layne Bowler Pump; Serial #74736: GE Motor 500 HP; Serial #MJJ1219021: Layne Bowler Pump; Serial #78858: Westinghouse Electric Motor 150 HP, Serial #773882UGA: Layne Bowler Pump; Serial #81030A: 3-8 Tower Valley Linear: Serial #10068676; Serial #1006877; Serial #10068665: 2-1/4 mile Center Rise Handlines: 3-Center Move Wheelines

Norris-Walker: US Electric Motor 100 HP; Serial #R-2942-00-171-E: Vertiline Pump; Serial #29718: GE Motor 60 HP; Serial #D35031: Vertiline Pump; Serial #D35031: Westinghouse Electric Motor 150 HP; Serial #66F31731: Goulds Pump; Serial #1E95056: 14-1/4 mile Center Drive Wheelines (various makes): 1-8 Tower Valley Pivot (2004); Serial #10318159:

Link: US Electric Motor 75 HP; Serial #R-2842-02-H-521: Layne Bowles Pump; Serial #99-74507-1: GE Motor 75 HP; Serial #FSJ618355: Vertiline Pump; Serial #99-7450-7-2: 1-7 Tower Valley Pivot; no swing arm; Serial #F0G1012: 5-1/2-1/4 mile Center Rise Handlines:

Fram's: US Electric Motor 75 HP; Serial #14H78W244: Berkley Pump; Serial #ON98B00202: US Electric Motor 75 HP; Serial #14JU98W45061: Berkley Pump; unable to read serial number: 1-7 Tower Valley Linear; Serial #2335498: 1-8 Tower Valley Linear; Serial #2135097: 1-8 Tower Valley Pivot; Serial #2134997: 1-8 Tower Valley Pivot; Serial #2444297: 1-8 Tower Valley Pivot; Serial #2444097: 1-8 Tower Valley Pivot; Serial #2334898:

1-8 Tower Valley Pivot; Serial #2444697: 1-8 Tower Valley Pivot; Serial #2453596: 1-8 Tower Valley Pivot; Serial #2453496: 2-Handlines each corner

Coiner: 9-7 Tower Linears; Serial

EXHIBIT B
Cummins Farms Inc
Water Rights Exhibit
Tract I - North Farm

	Number	cfs	Priority Date	Acres	Stage
The Home Place					
Id Dept Water Resources	45-2282	0.70	11/19/48	100.00	License
	45-2588	2.24	08/11/59	217.00	License
	45-2599	1.39	01/18/60	217.00	Decreed
	45-10172	0.08	12/31/59		Domestic Decreed
	31338			65.29	Shares
Twin Falls Canal Co					
Hawker - Canyon					
Twin Falls Canal Co	36083*			183.30	Shares
*Certs 33549 for 121 share and 35607 for 62.30 shares combined to one certificate.					
Moore					
Twin Falls Canal Co	35412			125.00	Shares
	35413			122.00	Shares
	35414			32.00	Shares
	35415			67.00	Shares
Norris					
Twin Falls Canal Co	35723			132.66	Shares
Walker					
Twin Falls Canal Co	35363			223.77	Shares
	35364			57.34	Shares
Link					
Twin Falls Canal Co	34604			207.00	Shares
Coiner					
Twin Falls Canal Co	35683			13.30	Shares
	35684			20.00	Shares
	35685			20.00	Shares
	35686			1.00	Shares
	35687			31.24	Shares
	35688			23.00	Shares
	35689			13.02	Shares
	35690			23.52	Shares
	35691			60.00	Shares
	35692			35.00	Shares
	35693			37.00	Shares
	35694			15.00	Shares
	35695			2.50	Shares
	35696			37.21	Shares
	35697			80.00	Shares
	36158			135.61	Shares
Fram					
Twin Falls Canal Co	35304			1.92	Shares
	35416			63.01	Shares
	35550			28.00	Shares
Adams - Desert					
Twin Falls Canal Co	34014			11.50	Shares
	34017			17.63	Shares
	34167			8.27	Shares
	34176			23.88	Shares
	34819			17.00	Shares
Additional Water Rights Available for Tract I					
Artesian Irrigation, Inc.	46			2866.00	Shares
			equivalent to:	533.00	Acres Feet
within the Artesian Irrigation, Inc. District delivery through Murtough Lake					

Right Number	Priority Date	Basis	Use	Diversion Rate	Volume	Total Acres	Notes
45-2383	19-Jun-79	License	Irrigation	1.82 cfs	888 afa	243.0	
45-2674A	11-Sep-82	License	Irrigation	4.22 cfs	1148 afa	287.0	
45-2689	9-Nov-62	License	Irrigation	5.82 cfs	1976 afa	494.0	
45-7820	6-Apr-67	License	Irrigation	3.76 cfs	752 afa	188.0	
45-7034	3-Mar-69	License	Irrigation	2.94 cfs	580 afa	148.0	
45-7035	28-Feb-69	License	Irrigation	5.79 cfs	1280 afa	320.0	
45-7110	18-Sep-72	License	Irrigation S	4.00 cfs	1248 afa	319.0	
45-7238	2-May-73	License	Irrigation	6.40 cfs	2356 afa	634.0	
45-7374	11-Apr-79	License	Irrigation	3.10 cfs	620 afa	153.0	
45-10288	1-Sep-55	Decreed	S/D	.24 cfs			Quantity not to exceed 13,000 gal per day; 25 cattle and horses
45-10289	1-Sep-60	Decreed	S/D	.04 cfs			Quantity not to exceed 13,000 gal per day; 100 cattle
45-10290	12-Nov-66	Decreed	S/D	.24 cfs			Quantity not to exceed 13,000 gal per day; 100 cattle, 1000 sheep
45-10271	12-Nov-66	Decreed	S/D	.24 cfs			Quantity not to exceed 13,000 gal per day; 100 cattle, 1000 sheep
45-10272	12-Nov-66	Decreed	S/D	.24 cfs			Quantity not to exceed 13,000 gal per day; 100 cattle, 1000 sheep
45-10273	12-Nov-66	Decreed	S/D	.24 cfs			Quantity not to exceed 13,000 gal per day; 100 cattle, 1000 sheep
45-10274	15-Mar-62	Beneficial Use	Irrigation	.07 cfs	34 afa	494.0	
Pulsades Water Users, Inc, Cassia Co Holdings							
658					1000		Each right equivalent to an acre foot of storage in reservoir. Cost of six shares on average \$6.45 per share. Water is delivered by Millard Low Lib. These certificates are personal property.
660					100		

Right Number	Priority Date	Basis	Use	Diversion Rate	Volume	Total Acres
51-7038	20-Jun-69	Active	Irrigation	4.28 cfs		320.0
51-7030	30-Sep-68	Active	Irrigation	6.40 cfs		320.0
51-7018	5-Apr-68	Active	Irrigation	3.00 cfs		210.0
51-7014	19-Feb-68	Decreed	Irrigation	3.99 cfs	1280 afa	320.0
51-2189	24-Dec-63	Decreed	Irrigation	4.14 cfs	828 afa	207.0
51-2188	11-Jan-64	Decreed	Irrigation	1.62 cfs	786 afa	278.0
51-2186	9-Dec-63	Decreed	Irrigation	5.40 cfs	1080 afa	270.0
51-2185	9-Dec-63	Decreed	Irrigation	5.80 cfs	1160 afa	290.0
51-10292	31-Dec-71	Decreed	Domestic	0.04 cfs		
51-10291	20-May-68	Decreed	Domestic	0.04 cfs		
51-10290	20-May-71	Decreed	Domestic	0.04 cfs		
51-10201	1-Mar-77	Active	Domestic	0.04 cfs		
51-10137	30-Sep-75	Active	Domestic	0.04 cfs		
51-10046	30-Jun-85	Decreed	Irrigation	0.355 cfs		278.0

Right Number	Priority Date	Basis	Use	Diversion Rate	Volume	Total Acres
45-2576	10-Apr-59	License	Irrigation	5.94 cfs	1188 afa	297.0
45-7363	8-Jun-79	License	Irrigation	1.66 cfs	556 afa	139.0

Number	cfs	Priority Date	Acres	Stage
Twin Falls Canal Co	34875		359.93	Shares

— Continued on next page

Public notices

numbers as follow; 10068668; 10068672; 10068674; 10068673; 10068671; 10068669; 10068666; 10068670; 10068667: 1 Berkeley Motor; Serial #8UB 326TT DR8957ORL, 75 HP Pump; Serial #2C0191: 1 Berkeley Motor; Serial #8UB 404TT 038629AK, 100HP Pump; Serial #2C01D: 1 Berkeley Motor; Serial #8UB 326TT DR8957DR, 75 HP Pump; Serial #2C01M: 1 Berkeley Motor; Serial #F0601070042-004R, 40 HP Pump US; Serial 2K02D: 1 Berkeley Motor; Serial #F061070042-004R, 40 HP Pump US; Serial 2K02B: 1 Berkeley Motor; Serial #F0841070836-006R; 40 HP Pump; Serial #2K02B

Savage Desert: Baldor Motor 100 HP; Serial #S652695: Pump unknown make; Serial #01-9713: Motor unknown make 75 HP; Serial #70016658: Aurora Pump; Serial #77-44: 3-8 Tower Valley Pivots, Serial #64-P1-57024; 63-P2-62-870; 62-P3-68199: 1 Pivot; Serial #85436

Adams - Desert: 1-8 Tower Valley Pivot; Serial #73121: 1/4 mile Handlines on corner

Sprague: GE Motor 100 HP Serial #CMJ331103: Turbine pump of unknown make and serial number: US Electric Motor 20 HP Serial #1054179: Aura Vertiline turbine pump; serial number unknown: 118 Tower Valley Pivot; Serial #52245: 2-1/4 mile Center Drive Wheelines of various makes

TRACT II - South Farm

Goodman: Marathon Motor Electric 60 HP; Serial #42727870-5/12-06: Paco Centrifugal Pump; Serial #99B00365-A: 1-8 Tower Valley Pivot, Unable to obtain serial # due to crops; will get after harvest: 3-1/4 mile Center Rise Handlines

Adams: GE Motor 75 HP; Serial #OJJ423331: Aurora Vertiline Pump; no serial number: US Electric Motor 100HP; Serial #956758: Fairbanks-Morse Pump; Serial #PN8401: GE Motor 150 HP; Serial #FCJ623139: Layne Bowler Pump; Serial #1520: Deming Electric Motor; Serial #19297: Fairbanks-Morse Pump; Serial #P29801: GE Motor 50 HP; Serial #FNJ608499: Mid-South Pump; Serial #5913: 1-8 Tower Zimmatic Pivot; Serial #P49373: 2-8 Tower Valley Pivots; Serial #(S)073304 & (N)073306: 4-1/4 mile Center Rise Handlines

O Anderson: W3-US Electric Motor 75 HP; Serial #1015545: Fairbanks Morris Pump; Serial #P18488: Baldor Electric Motor 25 HP; Serial #JPM2516T: Paco Pump; serial number unknown: 1-1/4 mile Centre Rise Handlines

Breeding: GE Motor 150 HP; Serial #OLJ126020: 1-8 Tower Lockwood Pivot; Serial #B1347: 1-1/2-1/4 mile Center Rise Handlines

Carrier: US Electric Motor 125 HP; Serial #997055: Layne Bowler Pump; serial number unknown: Baldor Electric Motor 50 HP; Serial #0000210: Paco Centrifugal Pump; Serial #BOR00304H: GE Motor 125 HP; Serial #LKJ1113107: Layne Bowler Pump; serial number unknown: Motor 50 HP (maker unknown); Serial #8134-A-A00: Cornell Centrifugal Pump; serial number unknown: 1-8 Tower Valley Pivot; Serial #89-P3-63620: 1-8 Tower Valley Pivot; Serial #84-P2-IB1109: 3-1/4 mile Center Rise Handlines

Claiborn & Sumner: US Electric Motor 5 HP; Serial #R-8378-04-906: Aurora Vertiline Pump; serial number unknown: LS Electric Motor 40HP; Serial #2410502:

Aurora Vertiline Pump; Serial #37570290: US Electric Motor 40HP; Serial #HR-1031735: Fairbanks-Morse pump; serial number unknown: Demming Electric Motor unknown HP or serial number: Peerless Pump; Serial #2615803: Baldor Electric Motor 60 HP; Serial #02998: Paco Centrifugal Pump; serial number unknown: GE Motor 15 HP; Serial #ND6293: Fairbanks-Morse Morse pump, Serial #2F8546-1: US Electric Motor 40 HP; Serial #11800407: Fairbanks-Morse Morse Pump; Serial #PM9045: Marathon electric motor 60 HP; Serial #7404: Centrifugal Pump unknown make or serial number: US Electric Motor 40HP; Serial #3704482: Layne Bowler Pump; Serial #4414: Westinghouse Electric Motor 60 HP; Serial #9513T02H: Pump of an unknown make or serial number: GE Motor 125 HP; Serial #BHJ204102: Orteningto Pump; Serial #12-401QB013: Baldor Electric Motor 60 HP; Serial #14529W44661: Cornell Centrifugal Pump; Serial #79029: GE Motor 100HP; Serial #DWJ302115: Aurora Vertiline Pump; Serial #770: US Electric Motor 75 HP; Serial #945689: Fairbanks-Morse Morse Pump; serial number unknown: GE Motor 75 HP; Serial #HTJ805319: Layne Bowler Pump; serial number unknown: 25 HP motor make and serial number unknown: Paco Pump; Serial #G10X0P20108: GE Motor 125 HP; Serial #MMJ1201975: Layne Bowler Pump; Serial #17080: Baldor Electric Motor 60 HP; Serial #99B00365-B: Paco Pump; Serial #60-25013705200TZ512: 3-8 Tower Valley Pivots: 1-8 Tower Valley Pivot; Serial #85795: 1-8 Tower Zimmatic Pivot; Serial #279676: 15 -1/4 mile Center Drive Wheelines: 6-1/4 mile Center Rise Handlines:

Hawker: US Electric Motor 125 HP; Serial #997055: Layne Bowler Pump; serial number unknown: Marathon Electric Motor 50 HP; serial number unknown: Cornell Pump; serial number unknown: 1-7 Tower Pivot with Corner Catcher; Serial #80-P1-FB1579: 1-1/4 mile Center Rise Handline

Myers: US Electric Motor 60 HP; Serial #3125237R008R-3: Layne and Bowler Pump; Serial #16148: US electric Motor 40HP; Serial #3648363: Goulds Pump; Serial #58895: 1-8 Tower Zimmatic Center Pivot; Serial #88-P2-L47395: 1-1/4 mile Center Rise Handlines:

Nail: Century Electric Motor 20 HP; Serial #6-360538-02: Centrifugal Pump; make and serial number unknown: Century Electric Motor 30 HP Serial #6-355297-01: Cornell Pump; Serial #53836: Century Electric Motor 30 HP; Serial #6-355297-02: Cornell Pump; Serial #53835: GE Motor 100HP; Serial #XHJ96949181: Layne Bowler Pump; Serial #17096: Century Electric Motor 30 HP; Serial #6-355297-02: Cornell Pump; Serial #55837: US Electric Motor 200 HP; Serial #1021730: Layne Bowler Pump; Serial #269-76: 1-8 Tower Zimmatic Pivot; Serial #80-P3-L77580: 1-8 Tower Zimmatic Pivot; Serial #100-P1-L77581: 1-8 Tower Zimmatic Pivot; Serial #100-P2-L74898: 3-1/2-1/4 mile Center Rise Handlines:

Nebeker: GE Motor 150 HP; Serial #YHJ6949196: Layne Bowler Pump; Serial #15890: Lincoln Electric Motor 50 HP; Serial #1352241: Cornell Centrifugal Pump; Serial #64206: US Electric Motor 100 HP; Serial #1065226: Layne Bowler Pump;

serial number unknown: GE Motor 75 HP; Serial #LJS14035: Cornell Centrifugal Pump; Serial #15747: 2-8 Tower Valley Pivots; Serial #84-P1-HB1347 & 97-P2-IB1110: 2-1/4 mile Handlines:

L. Stanger: GE Motor 100HP; Serial #NRJ114012: Layne Bowler Pump; Serial #1775: Baldor electric Motor; plate with serial number missing: Centrifugal Pump; make and serial number unknown: 1-8 Tower Zimmatic Pivot; Serial #79546: 8-1/4 mile Center Driven Wheelines:

Stanger: US Electric Motor 100HP; Serial number unknown: Fairbanks-Morse-Morse Pump; Serial #PH41: Baldor Electric Motor 30 HP; Serial #6930: Cornell Pump; Serial #S345: US Motor Electric 100HP; Serial #956536: Peerless pump; serial number unknown: Marathon Electric Motor 30 HP; Serial #A15044A55: Cornell Pump; Serial #64199: GE Motor 125 HP; Serial #SMJ510003: Layne Bowler Pump; serial number unknown: Baldor Electric Motor 30 HP; Serial #4952-1494: Cornell Pump; Serial #391513: 3-8 Tower Valley Pivots: Serial #97-P1; 148326:80-P2; 800502; 89-P3; 073305: 3-1/4 mile Center Rise Handlines:

VanLueven: GE Motor 200 HP; serial number unknown: Aurora Vertiline Pump; serial number unknown: Marathon Booster Motor 60 HP; 30364TTD: Paco Centrifugal Pump; serial number unknown: US Electric Motor 125 HP; Serial #1032613: Fairbanks-Morse Pump; serial number unknown: GE Booster Motor 50 HP; Serial #SK326JL2262: Cornell Centrifugal Pump; serial number unknown: US Electric Motor 150 HP; Serial #A445UMP or 1405773: Deming Pump; Serial #12952: GE Booster Motor 50 HP; serial number unknown: Cornell Centrifugal Pump; Serial #35880: US Electric Motor 125 HP; Serial #326TCZ96080: Pump with no make or serial number available: Baldor Booster Motor 50 HP; serial #3426024W115: Paco Centrifugal Pump; serial number unknown: 1-8 Tower Valley Model 8000 Pivot; Serial #85817: 1-8 Tower Valley Model 8000 Pivot; Serial #85793: 1-8 Tower Valley Model 8000 Pivot; Serial #85816: 1-9 Tower Valley Wade Rain Retrofit Pivot; EN377:

Savage - Allen's: GE Motor 125 HP; Serial #YDG484013: Vertiline Pump; Serial #9072045: US Electrical Motors 125 HP; Serial #HC1023160: Vertiline Pump; serial number unknown: W4-US Electric Motor 125 HP; Serial #1239980: Fairbanks-Morse Pump; Serial #PH7741: W5-US Electric Motor 125 HP; Serial #1000218: Layne Bowler Pump; no serial number: W2-US Electrical Motors 200 HP; Serial #C1005076: Pump unknown make, Serial #00 74340: W1-GE Motor 100HP; Serial #ND013022: Peerless Pump; Serial #173371: US Electrical Motors 60 HP; Serial #934845: Fairbanks-Morse Pump; Serial #PM315: GE Motor 60 HP; Serial #RD155050: Vertiline Pump; serial number unknown: 2 Valley Linear Pivot; Serial #62052 and unknown: 2-8 Tower Valley Pivots; Serial #53293 and 62001: 3-1/4 mile Center Driven Wheelines

Savage Blue Bldg.: GE Motor 150 HP; Serial #MWJ1221109: Pump unknown make, Serial #D14634: GE Motor 200 HP; Serial #CSJ312127: Aurora Pump; serial number unknown:

2 Valley Linear Pivots; Serial #70015 and unknown: 3-1/4 mile Center Driven Wheelines

Funk Farm: W8-US Electric Motor 150 HP; Serial #1220589: Deep Well Turbine Booster: Unknown Booster Motor 75 HP; Serial #R-9426-03-204M: Centrifugal Booster Pump: W7-GE Motor 125 HP; Serial #DNJ420111: Deming Deep Well Turbine Booster: 1-8 Tower Valley Center Pivot; Serial #53303: 1-8 Tower Valley Center Pivot; Serial #53292:

TRACT III - Conrad Farms: S1-GE Motor 100 HP; Serial #ANJ112434: Layne Bowler Pump; serial number unknown: S2-GE Motor 100 HP; Serial #LJJ1107152: Layne Bowler Pump; Serial #75272: B3-Motor 20 HP; make and serial number unknown: Pump; make and serial number unknown: B4-Marathon electric Motor 60 HP; Serial #96583-219-3: Aurora Pump; Serial #7J-14429-2: B5-Marathon Electric Motor 60 HP; Serial #FL90897: Aurora Pump; Serial #7J-14429-3: S6-GE Motor 200 HP; Serial #NYJ117130: Pump; unknown make; Serial #9673945:

S7-US Electric Motor 75 HP; Serial #4066339-5: Layne Bowler Pump; Serial #D32759: S8-GE Motor 100 HP Serial #LBJ1130129: Aurora Pump; serial number unknown: B9-US Electric Motor 200 HP; Serial #CD120801-J93: Aurora Pump; Serial #7416507: W10-GE Motor 500 HP; Serial #DLJ416021: Aurora Pump; Serial #V76-72983: W11-US Electric Motor 100 HP; Serial #678585: Cornell Pump; serial number unknown: W12-US Electric Motor 60 HP; Serial #1259126: Layne Bowler Pump; Serial #D12663: W13-US Electric Motor 150 HP Serial #1402684: Layne Bowler Pump; Serial #D01006: W14-US Electric Motor 150 HP; serial number unknown: Peerless Pump; Serial #193223: B15-Marathon electric Motor 125 HP; Serial #1905420-613-02: Cornell Pump; Serial #6RB-125-4: W16-GE Motor 450 HP; Serial #EHJ503017: Layne Bowler Pump; Serial #181640: B17-The Louis Allis Co Electric Motor 75 HP; Serial #Z587980: Layne Bowler Pump; Serial #D40022: B18-US Electric Motor 150 HP; Serial #CZ684-01-171-J: Layne Bowler Pump; Serial #D35725: B19-Electric Motor 100 HP; make unknown; Serial #960827: Aurora Pump; Serial #77-06580-2: W23-GE Motor 350 HP; serial #UNJ713002: Layne Bowler Pump; Serial #D04194: B24-Marathon Electric Motor 100 HP; Serial #4Z536950-3120-04: Paco Pump; Serial #8-60157-650001: Linear Valley 1389' Model 800H; Serial #81467: Linear Valley 1389' Model 800H; Serial #81505: 6-Valley Pivots Models 8000; Serial #238839, 7366480, 747970, 81691, 244339, and 238849: 1-7 Tower Valley Pivot, Unable to obtain serial number due to crops, will get after harvest: 2-8 Tower Valley Pivots, Unable to obtain serial number due to crops, will get after harvest: 1-9 Tower Valley Pivot, Unable to obtain serial number due to crops, will get after harvest: 2-10 Tower Lockwood Pivots; Retro fit with Valley Boxes, Unable to obtain serial number due to crops, will get after harvest: 1-11 Tower Valley Pivot, Unable to obtain serial number due to crops, will get after harvest 16-1/4 mile Wheel lines Center Drive; Various Makes 12-1/4 mile Center Rise Handlines

TRACT IV - Blue Ridge: W-GE Motor 450 HP 1,770 rpm; Serial #AKJ123017: Aurora turbine pump; Serial #U74-00266: B-Marathon Motor 75 HP 1,770 rpm; no serial number available: American Marsh centrifugal pump; Serial #125643: W-GE Motor 400 HP 1,775 rpm; Serial #EKJ508021: Aurora turbine pump; Serial #37570237: B-Baldor Motor 30 HP 1,789 rpm; Serial #196C-734: Cornell centrifugal pump no serial number available: Toshiba variable frequency drive and central air conditioning unit: W-US Electric Motor 200 HP 1,800 rpm; Serial #1150500: Layne Bowler turbine pump; Serial #TF-18-1099: W-US Electric Motor 250 HP 1,800 rpm; Serial #J141397: Layne and Bowler turbine pump; Serial #D19438: W-US Electric Motor 300 HP 1,800 rpm; Serial #HC1029030: Layne and Bowler turbine pump; Serial #4459: W-GE Motor 200 HP 1,770 rpm; Serial #ATJ121116: Worthington turbine pump; Serial #VTP52215: W-US Electric Motor 200 HP 1,775 rpm; Serial #C1006583: Aurora turbine pump; Serial #3X170185: 14-8 Tower Valley Pivots: 1-9 Tower Valley Pivot: 1-7 Tower Valley Pivot: 4-3 Tower Valley Pivot: 1-5 Tower Valley Pivot, Unable to obtain serial number due to crops, will get after harvest: Approximately 1 1/2 - 1/4 mile in Handlines: Several miles of buried Mainline ranging in size from 6" to 15"

TRACT V - Picabo/Carey: Irrigation equipment is not associated with these parcels.

TRACT VI - 3rd Gen Beck Farm Equipment: GE Motor 400 HP; Serial #FY243055: Winroath Deep Well Turbine Pump; Serial #9878: Marathon Electric Motor 40 HP; Serial #A1059V-55: Centrifugal Booster Pump; serial number unknown: 3-7 Tower Valley Center Pivots, Unable to obtain serial number as it was unreadable: 320 Joints 3'X40' Aluminum Handlines with various valves connectors and end plugs

TRACT VII - 3rd Gen - Giles: Baldor Motor 100 HP: Centrifugal Pump Serial #294-C: 125 Booster Pump Motor; Serial #YA40575TDS7026GNW: Cornell Booster Pump 40 HP; Serial #103783126: 1-12 Towers Zimmatic Pivot; Serial #P-19842: 150 Joints of 3" Hook and Latch Handlines: 1,451-3/4; 1/4 mile Solid Set irrigation lines are used on the farms.

Together with all value openets, end plugs, risers, stems, sprinkler birds, wiring switch panels, shafting, hoses, tubing, bowls, suction pipe, cones, reducers, above and below ground pipe, etc., pertaining to the above listed irrigation equipment.

Potato Cellar Equipment

Specific buildings identified on the Building Supplement as Buildings 4, 5, 6, 7, 8, 9, 21, 34, 46, 47, 54, 55, 56, 57, 58, and 59.

All Plenum pipe, control panels, fans, cooling units and refrigeration units, pertaining and appurtenant and adequate for all potato storage facilities attached to the secured property, and the replacements thereof.

11/22,29;12/6/06

For FAST results...
try the
Classifieds!

Public notices

**NOTICE OF PUBLICATION
BID REQUEST FOR
GRAVEL CRUSHING**

Sealed bids will be received by the Owyhee County Road and Bridge Department, Attn: David Miller P.O. Box 128 Murphy, Idaho 83650 until 5:00 p.m. on December 8th 2006 for the crushing of gravel and asphalt with the following specifications:

Recycle asphalt to be crushed ¾ minus \$4,000 yards (6000) tons Bruneau (jaw)

Recycle asphalt to be crushed ¾ minus \$4,000 yards (6000) tons Grandview (jaw) ½ inch chips 10,000 tons to State Specs, Grandview.

Bids will be awarded on December 11, at 10:00 a.m. by the Owyhee County Board of Commissioners at their regularly scheduled meeting.

The completion date shall be before April 1, 2007.

For more information please contact Dave Miller at the Bruneau Shop, (208) 845-2746.
11/22,29/06

NOTICE

On January 10, 2007 beginning at 10:00AM the Owyhee County Planning and Zoning Commission will hear testimony in Courtroom #2, Owyhee County Courthouse in Murphy, Idaho on the following matters at the times listed below. When hearings are finished the commission will take up administrative matters:

10 AM SCOTT GRINSTEAD has filed an application for a conditional use permit to subdivide 24 acres into 4 lots ranging in size from 5 acres to 7 acres. Subject property is located in an Agricultural Zone south of Marsing off of Highway 78 and Pershall Road in Section 9, Township 2 North, Range 4 West, Boise Meridian, Owyhee County

2 PM DICKERSON INVESTMENT GROUP has filed an application for a conditional use permit to subdivide 60 acres into 19 residential lots 3 acres in size. Subject property is located in an Agricultural Zone southwest of Marsing off of Highway 95 and Poison Creek Road in Sections 18 & 19, Township 2 North, Range 4 West, Boise Meridian, Owyhee County

4 PM DICKERSON INVESTMENT GROUP has filed an application for a conditional use permit to divide a 20 acre parcel into 6 commercial lots 3 acres in size. Subject property is located in an Agricultural Zone southwest of Marsing off of Highway 95 and Poison Creek Road in Section 18, Township 2 North, Range 4 West, Boise Meridian, Owyhee County

Information regarding these applications can be obtained by calling the Owyhee County Planning and Zoning at (208)495-2095
11/29/06

**NOTICE OF PUBLIC
HEARING**

Please be advised that a public hearing will be held before the Planning and Zoning Commission of the City of Homedale on the 4th day of December, 2006, at 7:00 p.m. at Homedale City Hall, 31 West Wyoming, Homedale, Idaho.

The subject matter of this hearing is the Application for Subdivision and Application for Special Use Permit filed by Landmark Engineers on behalf of the developers of Silver Sage Subdivision No. 3. The

developer is proposing to build three four-plexes on a site that is approximately 1.09 acres. This site is located north of the existing phases of Silver Sage Subdivision, north of Fourth Street and Silver Sage Way. A copy of the plat of the proposed Phase 3 is available for reviewing at City Hall.

The public is invited to attend and offer input.

Sylvia L. Bahem, Administrator
Planning & Zoning Commission
City of Homedale
11/22,29/06

**NOTICE OF PUBLIC
HEARING**

The City of Homedale is submitting an application to the Idaho Commerce and Labor for an Idaho Community Development Block Grant (ICDBG) for up to \$500,000. These funds would be utilized to provide road and public infrastructure improvements in support of new job creation in Homedale.

The hearing will include a presentation of the application, scope of work, budget, schedule, benefits of the project, and the location of the proposed project.

The funds are authorized by the Department of Housing and Urban Development Act of 1974. The hearing has been scheduled before the Homedale City Council on **Wednesday December 6, 2006 at 6:00 pm at the Homedale City Hall, Homedale, Idaho.** Upon request to Homedale City Hall, the draft application and application handbook are available for review prior to the hearing and will also be available at the hearing. Written and verbal comments will be accepted up to the close of the hearing on December 6, 2006.

The public hearing will be held in a facility accessible to persons with disabilities. Special accommodation will be available, upon request, five (5) days prior to the hearing in a format that is usable to persons with disabilities. For more information, contact Alice E. Pegram, City Clerk-Treasurer at (208) 337-4641.

Attest: Alice E. Pegram, City Clerk-Treasurer
City of Homedale
11/29/06

**NOTICE TO CREDITORS
CASE NO. CV-06-05768
IN THE DISTRICT COURT
OF THE THIRD JUDICIAL
DISTRICT
OF THE STATE OF IDAHO,
IN AND FOR THE COUNTY
OF OWYHEE**

IN THE MATTER OF THE ESTATES OF: MARGARET D. LONG and, LESTER H. LONG, Deceased.

NOTICE IS HEREBY GIVEN that ALVIN LONG, 19266 Symms Road, Caldwell, ID 83607, has been appointed Personal Representative of the above-named Decedents. All persons having claims against the Decedents or the estates are required to present their claims within four months after the date of the first publication of the Notice to Creditors, or within 60 days after the undersigned mailed or delivered a copy of this Notice to such persons, whichever is later, or said claims will be forever barred.

Claims must be presented to the undersigned at the address indicated, and filed with the Clerk of the Court.

DATED: November 21, 2006.
LOVAN ROKER, P.C.
/s/ERIC F. BALDWIN,

Attorneys for Petitioner
Lovan Roker, P.C.
Gregg E. Lovan- ISB No. 1762
Matthew J. Roker- ISB No. 4835

Eric F. Baldwin- ISB No. 6240
T. Shane Darrington- ISB No. 6461

Attorneys at Law
717 South Kimball, Ste 200
Caldwell, ID 83605
Phone: 208-459-6795
Fax: 208-459-6908
Attorneys for Petitioner, ALVIN LONG
11/29;12/6,13/06

**NOTICE OF TRUSTEE'S
SALE**

**LOAN NO: 1001947309
T.S. NO.: 06-5503-ID**

On 02/28/2007 at 11:00 AM (recognized local time), At the entrance to the Owyhee County Courthouse 20381 State Hwy. 78 Murphy, ID 83650. In the County of Owyhee, State of Idaho, First American Title Insurance Company, as Trustee on behalf of Mortgage Electronic Registration Systems, Inc. will sell at public auction to the highest bidder, for cash, in lawful money of the United States, all payable at the time of sale, the following described real property, situated in the County of Owyhee, State of Idaho, and described as follows: The north half of Lot 7 and the north half of the west half of Lot 6 of block 2 of the amended townsite plat of Homedale, Owyhee County, Idaho, according to the official plat thereof on file and of record in the office of the recorder for Owyhee County, Idaho. The Trustee has no knowledge of a more particular description of the above referenced real property, but for the purposes of compliance with section 60-113 Idaho Code, the Trustee has been informed that the address of: 631 W. Nevada Homedale, ID 83628, is sometimes associated with the said real property. Said sale will be made without covenant or warranty regarding title, possession or encumbrances to satisfy the obligation secured by

and pursuant to the power of sale conferred in the Deed of Trust executed by: Phillip J. Ithurburn and Shannon K. Ithurburn, husband and wife, As grantors, To: First American Title Insurance Company as successor Trustee, for the benefit and security of Mortgage Electronic Registration Systems, Inc., as Beneficiary, dated 4/21/2006, recorded 04/27/2006, as Instrument No. 256116, records of Owyhee County, Idaho. Please Note: The above Grantors are named to comply with section 45-1506(4)(A), Idaho Code. No representation is made that they are, or are not, presently responsible for this obligation set forth herein. The Default for which this sale is to be made is the failure to pay when due, under Deed of Trust and Note dated 4/21/2006. The monthly payments for Principal, Interest and Impounds (if applicable) of \$520.49 due per month from 6/1/2006 through 2/28/2007, and all subsequent payments until the date of sale or reinstatement. The principal balance owing as of this date on the obligation secured by said Deed of Trust is \$70,100.00, plus accrued interest at the rate of 8.125% per annum from 5/1/2006 All delinquent amounts are now due, together with accruing late charges, and interest, unpaid and accruing taxes, assessments, trustee's fees, attorney's fees, and any amounts advanced to protect the security associated with this foreclosure and that the beneficiary elects to sell or cause the trust property to be sold to satisfy said obligation. Dated: 10/27/2006 By: First American Title Insurance Company By Allnaton Default Services, Its Duty Authorized Agent 4665 MacArthur Court Suite 250 Newport Beach, CA 92660 949-252-2800 Les Poppitt, Sr. Vice President P261866
11/8,15,22,29/06

**NOTICE OF HEARING ON
NAME CHANGE
CASE NO.: CV-2006-05763H**
A petition to change the name

of Hannah Lynne Gibson, born 5/8/91 in Twin Falls, Idaho residing at 2723 Kingsway Dr., Homedale, Idaho has been filed in Owyhee County District Court, Idaho. The name will change to Hannah Lynne Johnson, because she would like to have the last name of her stepfather and the rest of the family with whom she lives. The child's father is living. The child's mother is living.

A hearing on the petition is scheduled for 10:30 o'clock a.m. on December 20, 2006, at the County Courthouse. Objections may be filed by any person who can show the court a good reason against the name changes.

Date: 11/6/06
Charlotte Sherburn, Clerk of the District Court
By Jan Fink, Deputy Clerk
11/15,22,29;12/6/06

**NOTICE OF HEARING ON
PETITION FOR
GUARDIANSHIP
CASE NO. CV06-5653
IN THE DISTRICT COURT
OF THE THIRD JUDICIAL
DISTRICT OF THE
STATE OF IDAHO, IN AND
FOR THE COUNTY OF
OWYHEE**

In the Matter of the Guardianship of: Janae Lynn Volk and Avery Ryan Volk, Minor Children.

TO: ANNA JANAE COOK
NOTICE IS HEREBY GIVEN that on Monday, January 8, 2007, at the hour of 3:30 p.m. of said day, or as soon thereafter as counsel can be heard, before the Honorable Thomas J. Ryan, Magistrate Judge, at the Owyhee County Courthouse, 20381 State Hwy 78, Murphy, Idaho 83650, the Petition for Guardianship filed herein will be heard.

DATED this 21st day of November, 2006.
/s/William H. Wellman
Attorney for Petitioner
228 Twelfth Ave. Rd.
PO Box 453
Nampa, ID 83653
Phone 208/467-5009
Fax 208/467/3945
11/29;12/6,13/06

The Newspaper: Make it your business.



We're committed to keeping you informed of developments that affect you at work and at home. From school and community events to city and county government news, this newspaper keeps you on top of what's happening in Owyhee County.

It's an essential component of our free, democratic society, delivering information that lets you develop informed opinions and decisions.

Make a commitment to be informed.

Subscribe today.

The Owyhee Avalanche

337-4681 • PO Box 97 • Homedale, ID 83628 • owyheeavalanche@cableone.net

Outshine Santa This Christmas

Residents have included several gifts on their wish lists, but local "Santas" need only to select one item. Gifts should be gift wrapped and tagged with the number and item selected. Gifts need to be dropped off to the Avalanche office before Dec. 21. Gifts will be delivered to Owyhee Health & Rehabilitation Center on Dec. 21.

1. Male: Puzzles (something to do w/hands)
2. Female: Portable CD player, religious CDs, gardening books, talking books
3. Female: Perfume, jewelry, socks
4. Female: Socks, clothes (l), perfume
5. Male: Portable CD player, watch
6. Female: Underwear (8), earrings
7. Male: Electric shaver, western shirts (xl)
8. Male: Shoes, slippers (11), old time country music CDs
9. Female: Radio, underwear, socks (Fruit of the Loom 7)
10. Female: Scrap booking kit, fuzzy socks, photo albums
11. Female: Bras (38D), button up blouses (l)
12. Female: Ankle socks, moo-moo dresses (4x)
13. Female: Throw pillow, stuffed animal
14. Female: Blouses (m), slacks (14), stuffed animal, talking doll
15. Female: Blouses (m), underwear (5), socks, slippers (9)
16. Female: Sports bra (l), shoes (9), case of Pepsi
17. Female: Makeup, jewelry, perfume
18. Female: Perfume (musk), slippers
19. Male: Socks, button up dress shirts (m/l), mens jewelry box
20. Male: Electric shaver, underwear (m/l), aftershave
21. Female: Chocolates, small earrings, jewelry box
22. Female: Silky blouse with slacks (12/14)
23. Female: Art set, fuzzy posters for coloring
24. Female: Blue sweatshirts (m)
25. Female: Knit tops (m), slacks (10)
26. Female: Turtle neck (l), beaded jewelry
27. Female: Body pillow, sweaters (m), slacks (m)
28. Male: Long sleeved western shirts (xl), aftershave, cologne
29. Male: Portable CD player, classical CDs, slippers (10.5)
30. Male: Slippers (l), brief underwear (m)
31. Male: Fuzzy blanket, slippers (l), sweatshirt (xl)
32. Male: Sweatpants (l), t-shirts (l), sweatshirt (xl)
33. Female: Sweat suit (xl), socks, perfume
34. Female: Slippers (l), blanket, body pillow
35. Female: Sweatshirt (3x), caffeine free soda
36. Male: Western shirts (m), jeans (32wX34l)
37. Male: Coat (l), hooded sweatshirt (l), electric razor
38. Female: Sweatshirt (m), hat & gloves, socks
39. Male: Sweatshirt (l), cologne, sports decor, twin size bedding

The annual
Owyhee Avalanche
Christmas gift
project for the
residents of
Owyhee Health &
Rehabilitation
Center Homedale
begins
this week.

Miscellaneous Items:

Hairbrushes,combs, blankets, socks,
hair trimers, books, puzzles, books,
yarn, chocolates & other items
are always welcome and very
much appreciated.

Give a Gift to Care Center Residents